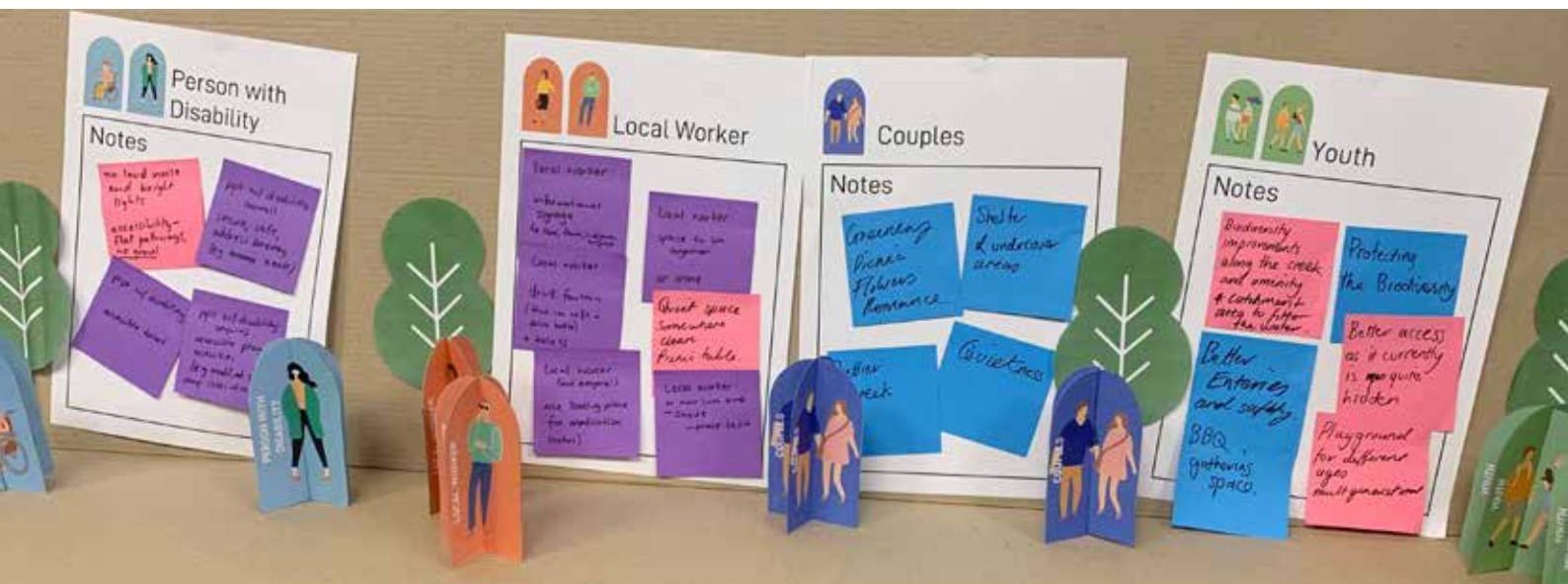


COMMUNITY ENGAGEMENT SUMMARY

NORTH UNLEY PARK
MASTER PLAN
SEPTEMBER 2021



ABOUT THE ENGAGEMENT

The City of Unley undertook community engagement to understand and appreciate the range of views and experiences, to develop a shared vision for the future of North Unley Park.

The City of Unley 'Living City Open Space Strategy' outlines the strategic importance of this park and elevating North Unley park to a 'Neighbourhood Park' status and the role of the Park within the wider region.

Phase one began as Council-led community consultation in Aug-Sept 2021 to explore the types of experiences and views of the park. There was great local interest and participation in the engagement process with over 100 people contributing through face-to-face and online methods.

Diverse responses were gathered through each method of engagement. This included the participation of 2 reference groups, internal stakeholder groups, 48 responses to the Online survey, over 80 attendees at the community engagement day, and 185 visits to the YourSay website.

There were some differing views about the future of the Park. However, views were expressed in all areas of the engagement to improve the experience with the creek, safety and improvements to the visual amenity and facilities.

90+
ideas and
comments

48
online
surveys

185
YourSay
Site visits



WHAT YOU TOLD US

From your feedback we heard several key themes were important to you. We will use these to inform the development of the Master Plan.

We heard the community values the close proximity and locality of North Unley Park as well as the peaceful nature of the place. It was acknowledged by many participants throughout the engagement process recognise the need for improvements in the Park.



Improving the experiences with the creek and natural amenity

- Celebrate the creekline by removing the fence to create opportunities to interact with it
- Interaction with the water
- Enhance the biodiversity of the creek
- More accessible bridge and alternative ways to cross the creek
- Maintain the flood management requirements of the creek within the Park



Improving safety within North Unley Park

- Some people felt the Park was too enclosed and felt unsafe when visiting alone or unwelcomed
- The park has area which lack passive surveillance and have resulted in CPTED issues
- The need to investigate options to discourage antisocial behaviour



Improving the range of experiences for the local community

- Multi-generational and more adventurous play areas or Nature Play
- Whimsical garden or shared garden experiences
- Retain and enhance mixed use halfcourt and support with additional fitness equipment
- Enhance existing trails to support safe scooter/ bike riding loop



Improving facilities for social gatherings, picnics, barbecues and all weather access

- Accessibility to all facilities and amenities
- Gathering spaces with seating and shelters
- Increase the tree canopy for shade and habitat creation
- Relocate or replacement of a smaller toilet facility



WHO HAVE WE TALKED TO SO FAR?

ONLINE

YourSay Unley Online Portal



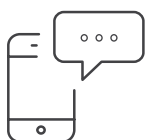
HOW WE ENGAGED

- www.yoursay.unley.sa.gov.au/northunley
- Online survey about how they currently use the park and the opportunities
- Ideas pin board and interactive drop pin map
- September 2021

WHO WE ENGAGED

- 48 registered respondents
- 185 YourSay page visits
- 20+ drop pins

Social Media



- Facebook and Instagram posts were used to promote the Community Engagement Days
- Adelaide East Herald article 23 Sept 2021

- Facebook Posts reached over 700 users and engagement with over 77 users
- Instagram Posts reached 500+ followers and 13 likes.

Information Posters



- Five locations were selected around the site and main streets to install information posters for both the online survey and community engagement day. September 2021

- Pedestrians, cyclist and drivers

IN PERSON

Targeted Reference Group Sessions

- Living Young Reference Group
- Active Aging Alliance Group
- Understanding different user groups and what the needs and preferences

- 25 Participants
- 80 + comments and ideas

Community Engagement Day



- An Engagement Day 12th September, 12- 3pm, registration through eventbrite
- 3 discovery stations throughout the park to ensure a covid safe event and gather ideas throughout the day.
- Council offered a chance to win a \$50 Capri Cinema Voucher as well as free ice cream and donuts

- 80+ Participants and conversations
- 90+ Ideas

Key Internal Stakeholders

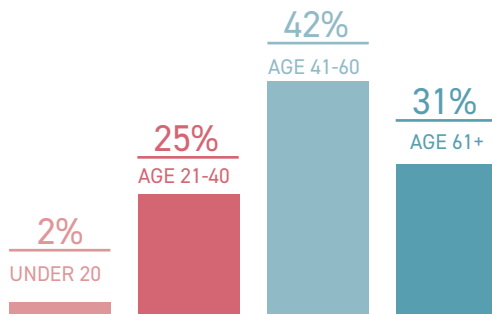


- City of Unley Elected Members Workshop
- One on one meeting were held with key internal stakeholders
- September 2021

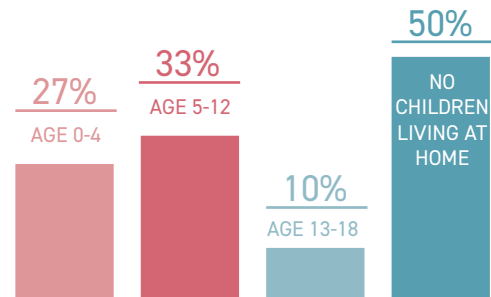
- 16 participants

SURVEY RESULTS

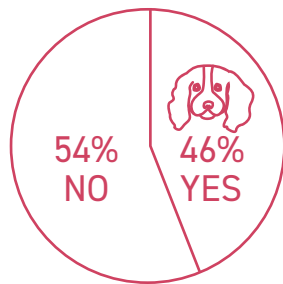
Age of people surveyed



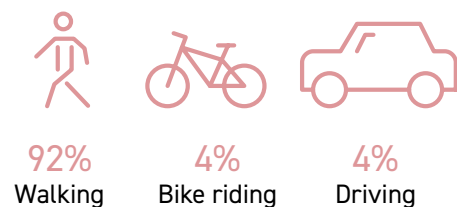
Households with Children



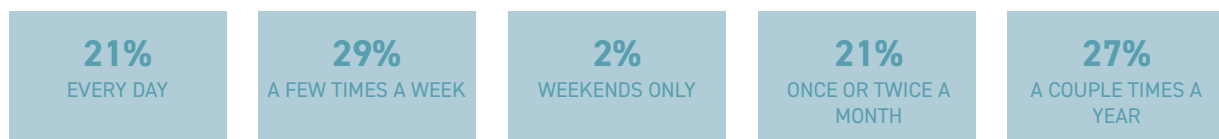
Do you have a dog?



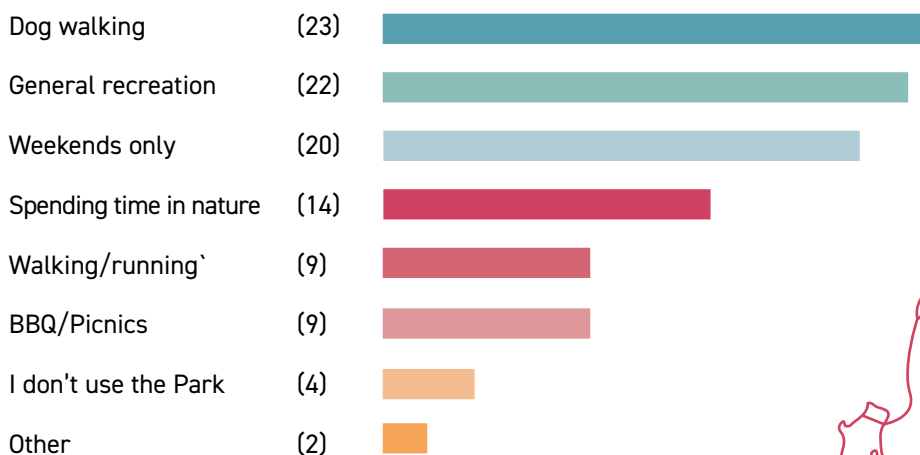
Travel to the Park by:



How often do you visit the Park?

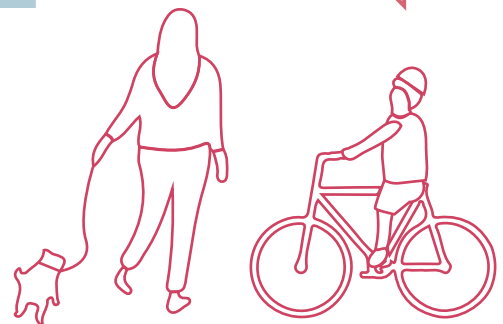


How do you currently use the Park?



"Practice bike riding"

"With grandchildren as part of a bike ride along Charles Walk".



SURVEY RESULTS

If you don't use the Park, please tell us why?

Unwelcoming

"It feels like a dead-end, **unwelcoming space**. It's hard to just pop in. Feels like it takes a lot of effort."

Enclosed access

"It is **too enclosed, not very welcoming**, has little in the way of facilities. It seems a bit pointless.."

Feeling unsafe

"It is not fully visible from the main roads and as such on and off I have seen some people in the park which **makes me feel quite unsafe** to be there on my own."

Lack of passive surveillance

"I have rarely seen anyone use it, one reason is the detour required to access the park, additionally it has area's that are not well-sighted kind of hidden or out of sight from the roads.. the creek is not well maintained..."



What do you not like about the Park ?

Outdated Playground

"**Terrible playground**. always too hot in summer. too difficult to climb, then a tiny slide! ride on toys and seesaw are awful".

Antisocial behaviour

"The **toilet block** which is **very unsafe**, attracting the wrong types of users to the park.."

Lack of community safety

"It feels small, not open spaced and not potentially safe (feels as though you could be cornered, **subjected to unwanted attention** and under the sight of bordering dwelling occupants)".

Difficult to access

".. It would be great if the playground could be upgraded to suit a wider range of ages..Dogs without leash make it difficult to access greenspace... accessible and safe..better lighting and safety measures".



What you like about the Park ?

Natural Environment

"The **natural and peaceful** space. The trees. The fact it isn't structured or over planned. It is natural and quietly welcoming. neighbourhood friendly and discreet...**private public space** for meditation and quiet enjoyment."

Peaceful Nature

"Great neighbourhood park with lots of friendly local visitors, very **good place for dogs** to run in their own space away from children's playground and BBQ areas."

Close proximity and locality

"My home opens out onto the park, through my back gate. I am in the park, several times a day...I love the park, because of the closeness to my property. I have quite an invested interest in the park, and **love the serenity** of it.."

Quite and Private

"It's a **quiet spot** that doesn't get too busy. It's green and secluded. The path is great for young **kids to ride their bikes** and scooters on."










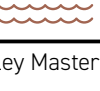


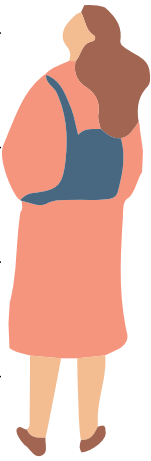
SURVEY RESULTS

If you could select one priority for North Unley park, What would it be?

<p>PRIORITY 1</p> <p>More Natural Park</p> <p>A more natural park which celebrates the creek passing through it</p>	<p>PRIORITY 2</p> <p>More Active Park</p> <p>A more active park with a range of play activities for the local community</p>	<p>PRIORITY 3</p> <p>More Greener Park</p> <p>A greener Park, valued for its open grassed areas, tree canopy and seasonal colour</p>	<p>PRIORITY 4</p> <p>Accessible Park</p> <p>A park that is easily accessible for people of all ages and abilities to safely relax within</p>
---	---	--	--

What additional features would you like to see provided at the Park? Please rank in order of importance from 1-10, with 1 being the most important and 10 being the least important:

<p>Ranking</p> 	<p>1</p> <p>Improve the connection to nature, creekline and visual amenity</p>
	<p>2</p> <p>Improve biodiversity and habitat creation for local wildlife</p>
	<p>3</p> <p>Create safe settings for people to see, do, experience and places to meet</p>
	<p>4</p> <p>Provide open grass areas for picnics, kick about and recreation activities</p>
	<p>5</p> <p>Design places to play and interact socially in a playground setting</p>
	<p>6</p> <p>Introduce spaces for social gatherings, picnics, barbecues and all weather access</p>
	<p>7</p> <p>Lighting for pedestrians and places where people gather to support safe night time access</p>
	<p>8</p> <p>Create an inclusive and social spaces accessible for all</p>
	<p>9</p> <p>Provide better connections and entries throughout the park, particularly to King William Road</p>
	<p>10</p> <p>Celebrate Kaurna connection to country</p>



REFERENCE GROUP OUTCOMES

The City of Unley engaged with two stakeholder groups called the Living Young Reference Group (Youth) and Active Aging Alliance Group (Seniors). Both reference groups were asked to imagine they were these key user groups and explored the types of needs and experience different people wanted in the Park. From the feedback we heard that several key themes were both important to the youth and seniors.



Living Young Reference Group



Active Aging Alliance

User Groups Feedback

Youth



- Biodiversity improvements along the creek and catchment areas to help filter the water
- Better entries and safety as entry is quite hidden
- Playground for different ages/ multi-generational
- Gathering/ Lounging spaces and BBQ areas
- Protecting biodiversity areas

Senior / Grandparent



- Security and good lighting
- Safe pathways and better connections to bike networks
- Accessible facilities such as toilets, seating
- Ambulance access
- Natural plantings
- Age friendly exercise equipment

Person with Disability



- Accessible facilities (paths, toilet)
- Somewhere safe, secure, no hazards (eg entrance and exits)
- Sensory or memory garden
- No loud noises or bright lights
- Protection from weather

Local Worker



- Connection with nature
- Information signage such as flora and fauna and indigenous language
- Facilities (Seats, water fountain, toilets)
- Spaces to sit together or alone on lunch break
- Phone charging station
- Workout area

Family



- Shelters, gathering BBQ areas
- Facilities such as toilets, seating and drinking fountain
- Play equipment with nature play and tree for climbing

Young Children



- Things to see and keep children entertained
- Nature play, and inviting playground area with monkey bars, slides etc
- Open grass areas

Couples



- Open picnic areas, drinking fountains, toilets
- Romantic garden areas with open grass areas and flowers
- Quietness and private spaces

Lone Person



- Importance on safety and access when visiting alone
- Dog friendly areas
- Places to sit in the shade and shelter from rain
- Activities to do such as exercise equipment

REFERENCE GROUP OUTCOMES

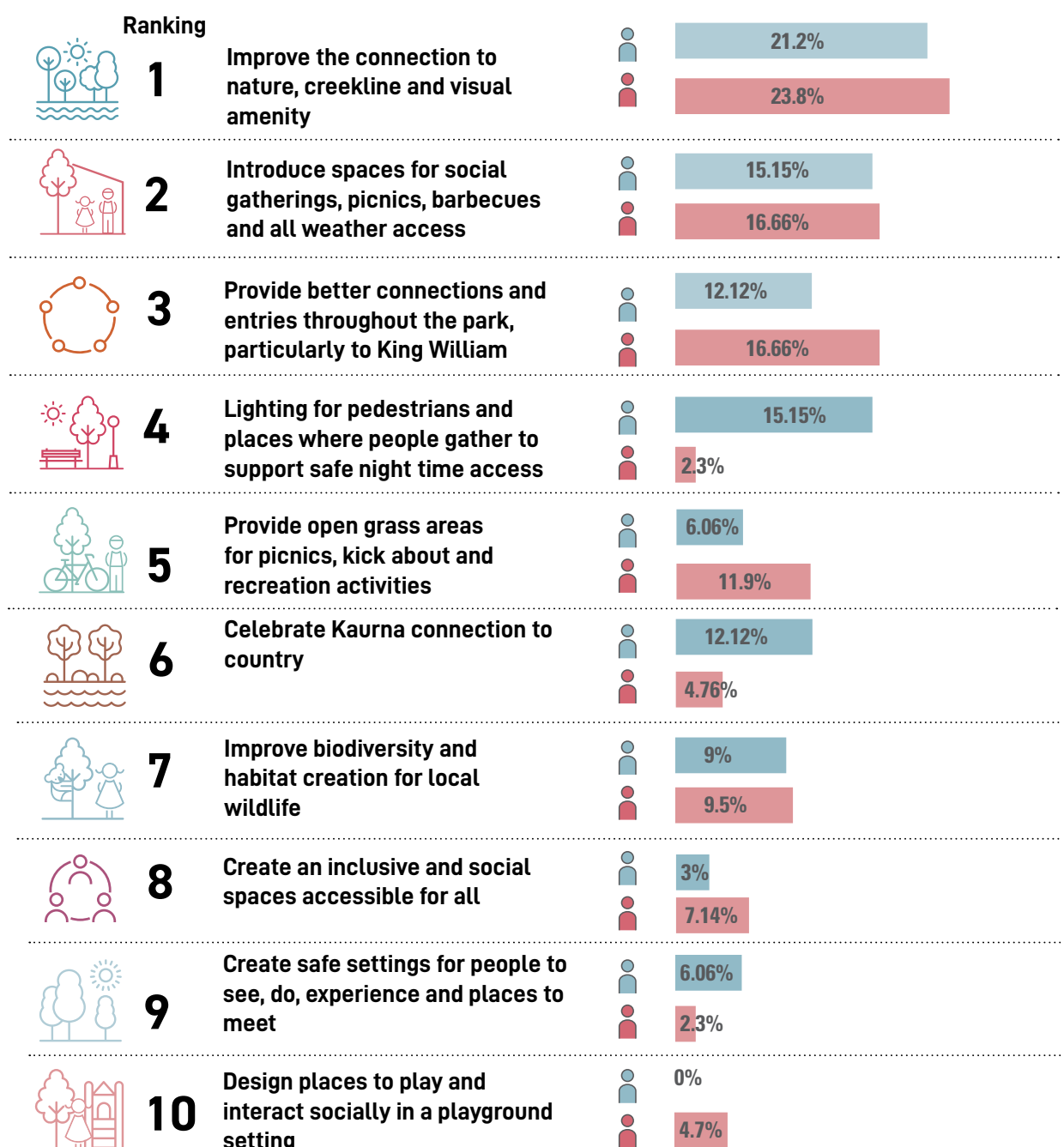
The reference groups were asked to use coloured dots to priorities the principles important to the redevelopment of North Unley Park. Similarly to the community Survey, the highest priority is to improve the connection to nature, creekline and visual amenity. As well as, higher priority for better connections and lighting access.



**Living Young
Reference Group**



**Active Aging
Alliance**





COMMUNITY ENGAGEMENT DAY

The community engagement day was held at North Unley Park on Sunday 12th September. Despite the wet cold weather over 80 participants attended the event. Three ideas stations were set up throughout the park to capture feedback on community ideas including opportunities and challenges for considerations in development of the Master plan.

"We need more stuff for bigger kids, Nature play and sandpit if possible, climbing frames, Access to King William Road, Places to sit and have some food, more bins, more places to sit/ shelter as kids play around"

"We need to incorporate the creek into water play area with stepping stones and multiply bridges for kids to climb across the creek, We need security lighting, shelter areas for sun and rain as well as more seating and picnic areas. "



Key Ideas

Improving the recreational experiences

- Gathering spaces with seating and shelters
- Active Recreation and open grass areas
- More adventurous play areas (treehouse/ flying fox/bike riding loop)
- Nature Play
- Relocation of the playground area
- Improved amenities and create accessible locations (lighting/bins/drinking fountain/toilets)
- Consider a mixed use halfcourt
- More communal spaces and shared community gardens
- Exercise equipment
- Differing opinions on fencing the Young Street entry for children and dogs
- Hidden/ whimsical garden experience



Key Ideas

Connection to Creekline and visual amenity

- More greening along the edges or consistent fences
- Activate the western side of the creek
- Less fencing of the creek
- A more accessible bridge and alternative ways to cross the creek
- Interactions with the water
- Increase planting along the creek and removal of invasive tree species (Ash and poplar)
- Balance flood management with creek interaction
- Improved maintenance of the creek
- Cover a segment of the creek to create more usable space



COMMUNITY ENGAGEMENT DAY

"Create more access from different parts of the park"

"We need walking access to King William Road"

"Don't open access to King William Road. It will create more through traffic 24/7"

"We need lighting for extended activation and recreation, galv fences greening to create (low) vista softening. Drain covered to creek, Killicoat St Access made inviting"

"We use this park for support group meetings. It is a great space and we are grateful the toilets are accessible. A path around the creek would be wonderful."



Key Ideas

Improving community safety and access

- Improved safety across the park
- Investigate low level lighting
- Relocation or replacement of a smaller toilet block to prevent antisocial behaviour
- More accessibility to neighbouring streets and parts of the park
- Investigate safer crossing point at Young Street entry



Key Issues

- Community safety relating to anti-social behaviour and CPTED issues.
- Concerns providing better access the park will create more anti-social behaviour or no longer retain its local private hidden appeal
- Flood management of the creek



COMMUNITY ENGAGEMENT DAY

Participants on the engagement day were asked to discuss and consider opportunities using a range of themed images and voted using coloured dots. A total of 266 dots were placed on the images. The top 3 images were places to interact with water, improvements to the creek line amenity and playspaces.



1
priority



**PLAYGROUNDS AND
NATURE PLAY**

57 votes

2
priority



**PLACES TO
INTERACT WITH
WATER**

37 votes

3
priority



**IMPROVE
CREEKLINE
AMENITY**

33 votes

HABITAT CREATION 23 votes

**RECREATIONAL
OPEN SPACE** 23 votes

LIGHTING 22 votes

**PLACES TO REST
AND RELAX** 20 votes

**AMENITIES AND
SHELTERS** 16 votes

**CONNECTIONS
AND ACCESS** 14 votes

**URBAN TERRACE
AND UTILISE
TOPOGRAPHY** 13 votes

**THINGS TO SEE
AND DO** 8 votes