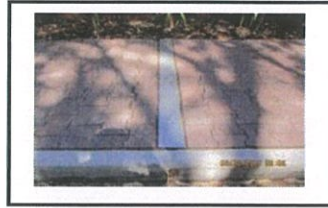
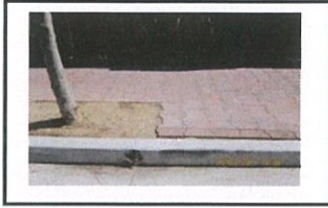


# Stormwater Pipe Installation, Bitumen Repairs and Footpath Paving Re-instatement Information Sheet

## INSTALL NEW STORM WATER PIPE AND COVER CHANNEL



CLASS 12 PVC PIPE & CHECKER PIPE CHANNEL

## NOT ACCEPTABLE STORM WATER PIPE INSTALLATION



## BITUMEN ON FOOTPATHS AND ROADS



## SA POWER NETWORKS (ETSA) TRENCH REINSTATEMENT

