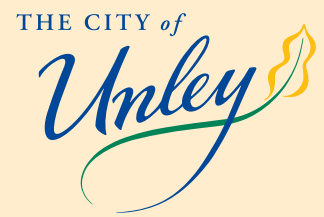


RIDGE PARK MASTER PLAN

R E D E V E L O P M E N T



MORE THAN JUST A WALK IN THE PARK





As the largest open space in the City of Unley, Ridge Park is a cherished natural haven and recreation destination for the local community. Its sprawling landscape, vibrant wildlife, and cultural heritage make it a unique asset within the council area.

The Ridge Park Master Plan builds on this legacy, delivering a comprehensive redevelopment that integrates modern amenities with environmental sustainability, inclusivity, and cultural heritage in mind. This vision ensures Ridge Park remains a premier destination for sport, recreation, and connection with nature in the City of Unley both now and into the future.

WHY INVEST?

Your investment in Ridge Park's redevelopment will drive key social, cultural, economic, and environmental benefits for the community. Ridge Park's redevelopment will:

- Cater to diverse user groups with improved facilities for junior and female sports, nature play, and active recreation.
- Deliver a new community hub incorporating accessible change rooms and other public amenities for broad community use.
- Enhance active recreation in the park by expanding the existing skate bowl and adding a pump track and BMX facilities to appeal to all abilities.
- Create spaces that promote social interaction, wellbeing, and community engagement.
- Enhance biodiversity through planting and rewilding initiatives.
- Integrate stormwater features into interactive and educational play spaces, promoting environmental education through interactive and immersive experiences.
- Attract visitors to the region, boosting local tourism and benefiting nearby businesses.
- Create job opportunities during construction and ongoing park management.
- Celebrate Karna cultural heritage by incorporating interpretive signage, educational programs, and design elements that honour Ridge Park's history.
- Support active recreation in a safe, inclusive environment.



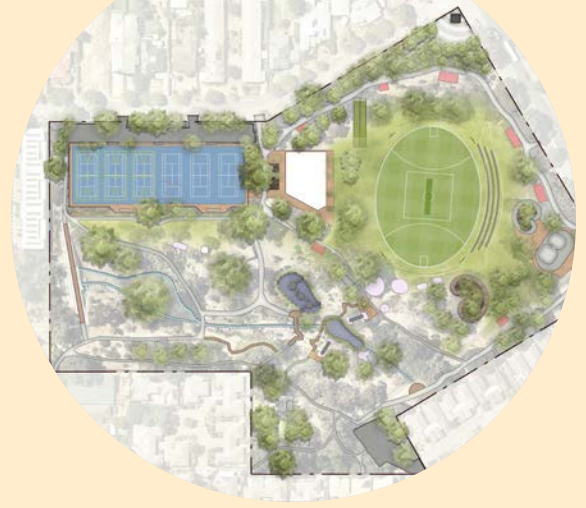
INVESTMENT OPPORTUNITIES

The City of Unley is seeking **\$10.5M** in funding to bring the Ridge Park Master Plan to life. This funding will enable the realisation of the:

- **Junior Sports Hub (\$6M)**
The Junior Sports Hub reconfigures and realigns the junior AFL/ Football oval and multi-sport hard court facilities. It also includes a new community hub with accessible changerooms, public amenities, and space for the Glen Osmond Scout Group, local sporting clubs and other community groups.
- **Wilding and Nature Play Area (\$2.5M)**
This initiative involves the expansion of wilding areas to enhance biodiversity, as well as the establishment of a dedicated nature play precinct with interactive stormwater features to promote cultural learning opportunities.
- **Small Wheel Hub (\$2M)**
The Small Wheel Hub will expand the skate bowl and add a pump track and BMX facilities to Ridge Park. This area will be designed for users of all ages and abilities with a focus on safety and inclusivity.



COMMUNITY SUPPORT



Feedback in the 2022 community consultation process for the Ridge Park Master Plan Redevelopment highlighted strong support for the project's vision from individuals within the community as well as the South Australian National Football League (SANFL) and South Australian Cricket Association (SACA).

Community members praised the proposal, emphasising its potential to enrich lives:

- "This is an excellent proposal and offers more space and opportunity for our youth to be outdoors and off electronic devices".
- "Great opportunity for kids to explore and interact with water and the environment."
- "A brilliant initiative and this project will be utilised by many organisations and people".

The SANFL and SACA noted the plan's potential to transform Ridge Park into a premier destination.

This overwhelmingly positive feedback underscores the Ridge Park Master Plan's alignment with community aspirations and its potential to become a dynamic hub for sport, recreation, connection, and engagement.

By investing in Ridge Park's redevelopment, you will be supporting a project that enhances the quality of life for the community while setting a benchmark for sustainable, inclusive, natural, and culturally significant open space.

"SANFL fully supports a place approach to the masterplan to ensure a diverse range of needs and interests are met at the site. SANFL participants and spectators would value the added activities at the site.....Redeveloping the site into a functional sporting destination will enable the site to be activated by various demographics at all times. The installation of oval lighting is integral to utilisation of the space throughout the winter months and providing an overflow options for local football clubs, walking football and school programs."

[Belinda Marsh, Infrastructure Manager, SANFL, 2022](#)

"The SACA commends the City of Unley on the development of the Draft Ridge Park Master Plan. The SACA appreciates that the Draft Master Plan has a clear vision for the Park and supports the four key actions for achieving the vision of the Master Plan."

[Simon Bradley, Community Infrastructure Leader, SACA, 2022](#)