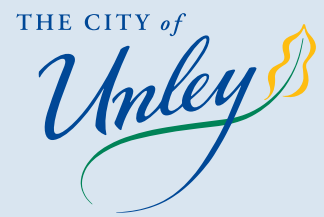


# UNLEY CULTURAL HUB



WHERE HISTORY, HERITAGE AND COMMUNITY THRIVE







Nestled in the heart of Unley's Village Green precinct, the Unley Cultural Hub seamlessly blends heritage charm with contemporary functionality. Connecting three Council-owned cottages on Edmund Avenue, the Cultural Hub will expand and transform Unley's multi-award-winning Museum into a vibrant destination where heritage meets innovation, arts inspire action, and community connections flourish.

The Cultural Hub will feature expanded exhibition spaces, welcoming both touring and large-scale exhibitions that draw visitors from near and far. It will serve as a creative haven for artists and historians in residence, a gathering place for local school groups, and a stage for family and community history exhibitions.

Easily accessible from the bustling Unley Road, the Hub will offer inclusive facilities, restored historic cottages, and green spaces that invite reflection, creativity, and connection.

With a blend of vibrant exhibitions, green spaces, and inclusive facilities, this project strongly aligns with the City of Unley's **Community Plan: Towards 2050** and South Australia's cultural and community priorities for cultural engagement, green spaces, and social connectivity.

With Unley's population projected to reach 44,000 by 2040, the Cultural Hub will serve as a cornerstone for cultural, educational, and recreational activities for our growing community. It will provide a platform for storytelling, shared learning, and creative expression; and meet the growing demand for quality cultural infrastructure.

Establishing Unley as a cultural focal point, the Cultural Hub will support creative industries and foster intergenerational connection. It will honour Unley's historical significance and activate the Unley Civic Precinct, ensuring equitable access and sustainable operations for diverse community use for generations to come.



## WHY INVEST?

Your investment in Unley's Cultural Hub will drive key social, cultural, and economic benefits for the community. The Cultural Hub will provide:

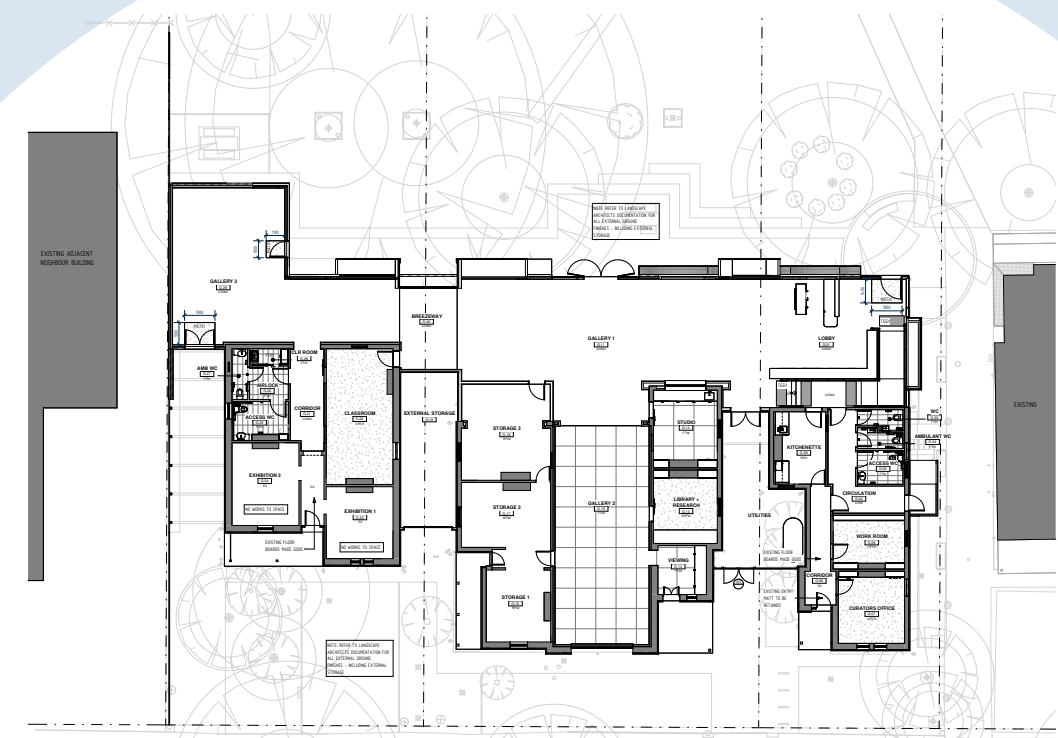
- Increased exhibition space to improve the visitor experience and accommodate larger groups.
- Improved amenity and versatility of the site to ensure inclusivity and operational efficiency.
- The ability to attract touring or large exhibitions, drawing local, national, and international visitors, boosting visitor bed nights, and driving economic growth for local businesses.
- Learning facilities for local school groups, including an onsite classroom / meeting space.
- A studio for artists and historians in residence.
- Improved local and family history offerings.
- Spaces for community history exhibitions.
- The restoration of three historic cottages on the Village Green, preserving Unley's historical character while enriching its modern appeal.
- Enhanced infrastructure, accessibility, and connectivity in the Village Green, supporting the activation of the area with outdoor programs and events.
- New job opportunities and a stronger creative economy.

## INVESTMENT OPPORTUNITIES

The Unley Cultural Hub project has received \$2.66M from the Federal Government's **Thriving Suburbs Program**, displaying strong confidence in this transformative vision.

Council is seeking a further **\$3.74M** in funding for this project to support the delivery of Unley's Cultural Hub and position Unley as a premier destination for culture, innovation, and community pride.

Draft Unley Cultural Hub floor plan designed by Grieve Gillett Architects for the City of Unley.



# COMMUNITY SUPPORT



"There is a real importance of providing high quality, social and cultural infrastructure in the region as it plays a vital role for bringing people and cultures together as one."

*Uncle Mickey Kumatpi Marrutya O'Brien*

"Art and culture are critical to ensuring liveable cities and play a crucial role in physical and mental health and wellbeing as well as social connection."

*Tansy Curtin, Curator of International Art, Art Gallery of SA*

"The importance of collecting and preserving our precious history cannot be understated. This project provides the opportunity to residents of Boothby to engage, learn and develop an appreciation of the social history of Unley and the state more broadly as our population grows and diversifies."

*Louise Miller Frost MP, Federal Member Boothby*

"The project ....will create exceptional, community focused infrastructure that will enhance amenity, liveability, social cohesion and cultural appreciation for residents and visitors to inner Adelaide."

*Marcia McLachlan, Consul Honoraire de France*



To discuss this project further, please contact:

Peter Tsokas  
Chief Executive Officer  
City of Unley

T 0412 782 002  
E [ptsokas@unley.sa.gov.au](mailto:ptsokas@unley.sa.gov.au)