

## DESIGN CONCEPT

City of Unley will be undertaking asset renewal works to upgrade Highgate Village on Fullarton Road in starting mid 2025. This includes new paving and street furniture with more tree planting and garden beds.

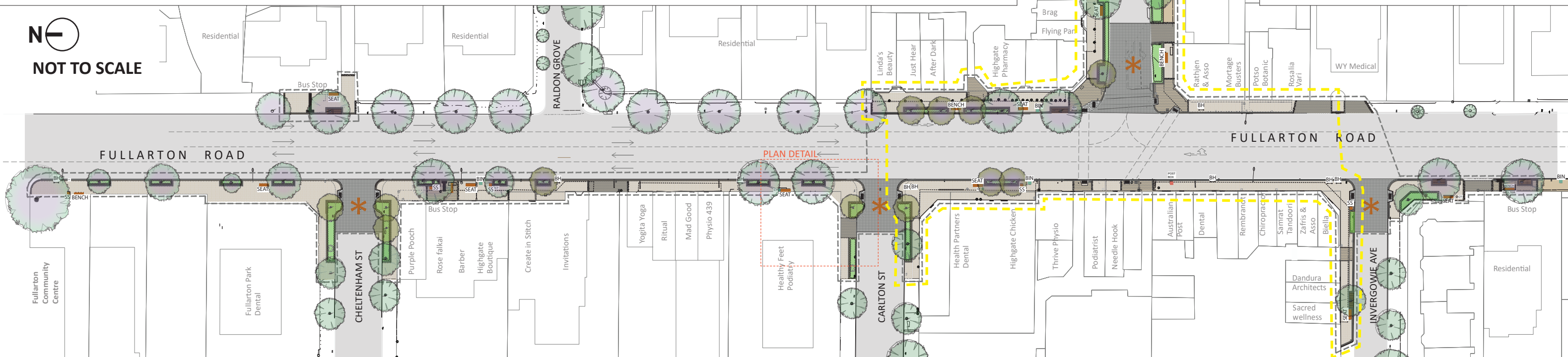
The side street entries at Cheltenham and Carlton Street and Ferguson Avenue will have paved road entries and improved pedestrian access.

The paving and street furniture suite is a contemporary design with earthy colours combined with flowering native and Indigenous plants to reflect the character of the nearby Adelaide Hills.

### LEGEND

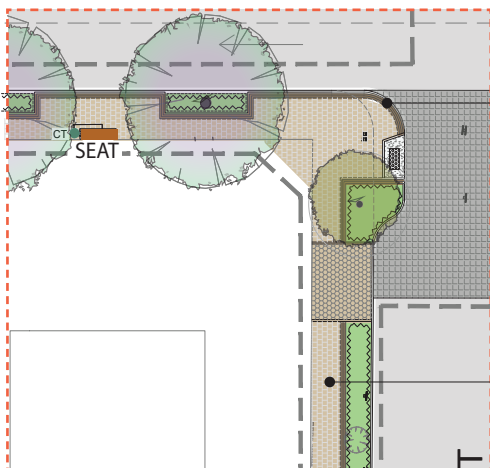
- |                   |  |
|-------------------|--|
| Scope of Work     | Improved Pedestrian Amenity/ Paved threshold |
| Stage One         | New Trees                                    |
| Garden Bed        | New Jacaranda trees                          |
| New Seat / Bench  | Existing Jacaranda Trees                     |
| SS Single Seat    | Existing Trees                               |
| Brick Edge Paving |  |
| New Paving        |  |
| BH - Bike Hoop    |  |
| BIN - Rubbish Bin |  |

For further inquiries, please call on 8372 5111 or email [citydesign@unley.sa.gov.au](mailto:citydesign@unley.sa.gov.au)



PLAN

### PLAN DETAIL



Typical paving layout in detail

### PAVING & STREET FURNITURE:



New pavers and street furniture suite

### NEW PLANTING PALETTE:



A sample of the plant species selected for the garden bed planting