
WILDLIFE BOX - REPORT

City of Unley - Monitoring and Servicing for 2023



Two Brushtail Possums, in a possum box (#022), at Heywood Park.

All photos contained within this report were taken during 2023, associated with surveying or maintenance activities, unless otherwise noted.

Report produced by James Smith, **fauNature**® 19 March 2024.



TABLE OF CONTENTS

| | |
|---------------------------------------|----|
| WILDLIFE BOX - REPORT | 1 |
| TABLE OF CONTENTS | 2 |
| SUMMARY | 3 |
| HISTORICAL DEVELOPMENTS | 4 |
| LOCATION & IDENTIFICATION | 6 |
| ARTIFICIAL HOLLOW USAGE | 8 |
| <i>Fauna recorded during survey</i> | 9 |
| <i>Wildlife Box Usage by Location</i> | 11 |
| <i>Other Fauna</i> | 12 |
| <i>Maintenance</i> | 13 |
| CONCLUSIONS & RECOMMENDATIONS | 14 |
| REFERENCES | 16 |
| APPENDIX A: LOCATIONS | 17 |
| APPENDIX B: PHOTO SUMMARY | 23 |
| APPENDIX C: GOOGLE MAP | 25 |

Two Rainbow Lorikeets, in a small parrot box (#010), in Ridge Park.



SUMMARY

The City of Unley's wildlife box programme has been operating since 2009. The wildlife boxes were designed, together with the council's indigenous planting programme, to support biodiversity across the city. The aim of the programme is to enhance habitat for, and management of hollow dependent urban fauna.

This report details the wildlife and maintenance activities that took place during 2023. The boxes were serviced during March-April, then surveyed for breeding activity in September-October 2023.

One hundred and eighty-three boxes were serviced/surveyed. The wildlife boxes are located within council parks, in street trees, on school grounds, community centres and private homes across the city.



Figure 1: Two Rainbow Lorikeet eggs, in a medium parrot box (#031), McLeary Park.

The Wildlife Box Programme has enjoyed a very strong year in 2023. "In Use" occupancy was 60%, over the survey periods. Total box activity of 91% was recorded, when 'In Use' over the year and 'Used in Last 12 Months' are considered together (Table 2; page 9). The "In Use" was the highest it has been, while total usage is consistent with the high rate of occupancy observed over the last five years.

The numbers of Rainbow Lorikeets (Figure 1), Galahs and Rosellas, using wildlife boxes during 2023, were all strong. Total numbers of eggs and chicks were high, with 46 and 114, observed respectively during spring. Brushtail Possum and Ringtail Possum numbers were at high levels in autumn and spring.

The program has increased its numbers with the addition of 11 wildlife boxes at Unley Primary School, towards the end of the year.

The Wildlife Box Program has supported high numbers of native species and also allowed Unley residents to observe, appreciate and even learn a little more about the city's wildlife. The programme continues to assist the City of Unley in meeting its biodiversity objectives.

HISTORICAL DEVELOPMENTS



Figure 2: Montage of student painted WBs from DPTI Install phase (2013).

Unley Council (UCC) engaged *fauNature*[®] to install, then subsequently service and monitor artificial hollows/wildlife boxes (WBs) across the city. The installations were staged in phases over fifteen years, and the activities associated with the WBs has been reported on annually.

The first Installations took place in May 2009. Initially 28 boxes were placed in Ridge and Heywood Parks, with a single box on Windsor St, Parkside. Progress reports were submitted in 2010¹ and 2011².

An additional 24 WBs were installed, across the city during 2012 (Figure 3), and a report detailing activities for the year was submitted³.

During 2013 the Department for Planning, Transport and Infrastructure (DPTI) undertook a number of Wildlife Box Building Workshops. These activities engaged local primary school students, and produced an additional 42 WBs, which were installed in late 2013 (Figure 2 & 6).



Figure 3: Early Install (2012), a

Once installed, the boxes became the property of Unley Council; further details can be found in the 2013 Annual Report⁴ and DPTI - Community Wildlife Project report.⁵

In late 2013 UCC added the management of ten brushtail boxes in Fullarton Park, installed some years earlier by a pest controller, to the program; further details can be found in the Annual Report⁶ (2014).

Habitat enhancement in Heywood Park, including remnant grey box (*Eucalyptus macrocarpa*) protection, saw an additional 17 WBs installed in August 2015. These

included the traditional boxes, but also large parrot, kookaburra and pardalote boxes (Figure 4), installed with an aim to increase biodiversity. These were included in the 2015 and 2016 Annual Reports^{7, 8}.

Opportunities for expanding the WB program were identified during 2016/17. Using biodiversity off-set stock, from the Ferguson Ave tree replacement project, 25 WBS were installed, primarily off Ferguson Ave (5; Myrtle Bank) and in Orphanage Park (11; Goodwood), with the remainder added to the smaller parks. Resident requests also prompted the install of eight boxes in the park off Fern Ave (Fullarton) and along Windsor St South. The 2017 Monitoring and Evaluation Report⁹ recorded a total of 157 WBs in-service across the city.



Figure 4: Pardalote (#120) boxes at Heywood Park.

The UCC Biodiversity Officer supported a wildlife box building project undertaken at Goodwood Primary School during Terms 3 & 4, 2017. The majority of these WBs were installed within the school grounds (8), with the rest installed in Orphanage Park (2), in June 2018. A total of 167 WBs were in-service across the City of Unley in 2018¹⁰.

UCC were approached by a resident in Myrtle Bank, and were gifted two small parrot boxes, which were installed in Ridge Park (June 2019). A second resident near Goodwood Oval, paid for a couple of large parrot boxes, providing memorial plaques to be attached. In conjunction with this Goodwood Primary School produce another 10 WBs, and paint all 12 for Installation, which took place in August/October 2019, further details are available in the 2019 Annual Report¹¹.

Five additional WBs were added in early 2020, to Wilberforce Walk in Everard Park. The total number of WBs across the City of Unley, stood at 186 for the 2020 Annual Report.¹² No WBs were added in 2021/2022.^{13,14}

Discussions had been held considering an expansion to the program through the central part of the city. Abbe Staugas from Unley Primary School received a grant from Green Adelaide to construct, paint and have installed 10 WBs. The WBs were built in mid-2023, subsequently painted and installed late 2023. During this process a wildlife rescue organisation gained approval to install a possum in a “rescue box”. These 11 WBs were all installed on the Unley Primary schools site and Diane Salvi from UCC advised these would be added to the existing program. This raised the total number of WBs across UCC to 197, as at the close of 2023.

LOCATION & IDENTIFICATION

One-hundred and ninety-seven WBs are currently installed across the UCC and it is essential to keep track of these assets. For each WB, the following information has been recorded: location (park/road), box type, box orientation, tree type, box height, GPS coordinates and a unique identifying number (Appendix A).

During the 2017 survey period the replacement of the identification numbers commenced, using a formally designed numbering system (Figure 5). This process was completed during 2018 and will be included for future installations.



Figure 5: Identification number (#126) on a medium parrot box, in Windsor St, PARKSIDE.

Most of the WBs are painted a pale green (Figure 3). By contrast, most of the boxes constructed by local primary school students have been individually decorated, so each is unique, as can be seen from the collection of images displayed (Figures 2 & 6).



Figure 6: Identification number, on a painted possum box (#160), in Goodwood Primary School.

The WBs are well distributed across the city, having been installed in 20 locations from Ridge Park in the East to Black Forest Primary School in the West and McLeary Reserve in the north to Jellicoe Avenue in the South. Numbers vary between locations, from a high of 27 in Heywood Park to a low of three in Everard Park Reserve. During 2023 an additional 11 WBs were installed, as a start to provided additional habitat in the central part of the city. Three unmanaged boxes are currently install on private property.

GPS coordinates/locations are recorded for each box (e.g. -34.96059S : 138.60158E) to ensure council staff or contractors can locate the boxes, as necessary (Appendix A).

MONITORING & MAINTENANCE

Specific wildlife observations were made for each WBs. Additionally, general observations were made for the area where the WBs are located. Species present are noted, particularly those utilising these WB resources.

The servicing and monitoring processes involve the WBs being inspected, initially from the ground, then at the height of the WB externally and finally internally. The WBs are assessed for evidence of use by wildlife (Figure 7), as well as overall condition. Details of the findings are recorded.

Maintenance for WBs is recommended once per year, to ensure WBs offer:

- 1) A safe resource for both people and wildlife;
- 2) Minimise potential impact on the tree;
- 3) Maximise the useful life of the WB.

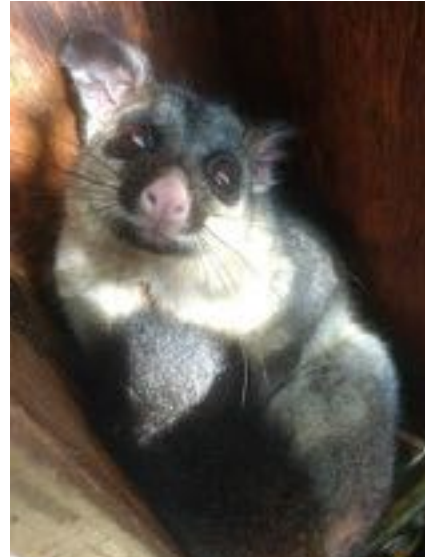


Figure 7: Small parrot box (#023) at Heywood Park, containing a Brushtail Possum.

February to May is an ideal time to service the WBs, as by this time most birds will have completed their nesting and annual usage will be at its lowest. Maintenance activities were undertaken in March-April 2023. Species like Brushtail Possums or micro-bats may be present year round, so while servicing can still be undertaken, it might only be partially completed. When there is fauna occupying a WB, additional precautions are taken.

During maintenance work, besides recording wildlife activity, the WBs are cleaned out, and where necessary, new bedding material is added. The securing mechanisms for the WBs are also adjusted, to allow for tree growth and to maximise safety.

Monitoring surveys for the WBs take place during spring (Sept-Nov), so assessment is undertaken during the period of highest nesting activity. These surveys were carried out in September-October 2023.

Photographs are taken during both monitoring and maintenance activities. These highlight the various signs of fauna utilising the WBs (e.g. adults, chicks, eggs, fur, feathers, chewing, staining, etc) and the condition of the WBs. Some of these photos have been used within the report itself, with a selection of additional images displayed in Appendix B.

ARTIFICIAL HOLLOW USAGE

The WBs were serviced in March-April and then monitored in September-October 2023. One hundred and eighty-three (183) WBs were serviced and/or monitored in 2023. The WBs are distributed across twenty locations throughout the city (Table 1; Appendix A). Eleven damaged or bee occupied WBs were replaced in 2023.

Table 1: Details the number of artificial hollows installed and monitored across the City of Unley during 2023.

| Locations | Number |
|-------------------------------------|--------|
| Black Forest PS, BLACK FOREST | 9 |
| Cromer Pde, MILLSWOOD | 14 |
| Devon St & Railway Tce, GOODWOOD | 4 |
| Ferguson Ave, MYRTLE BANK | 5 |
| Forestville Res.,GOODWOOD | 16 |
| Fullarton Park, FULLARTON | 10 |
| Goodwood Oval, GOODWOOD | 15 |
| Goodwood PS, GOODWOOD | 12 |
| Henry Codd, PARKSIDE | 2 |
| Heywood Park, UNLEY PARK | 27 |
| Hillsley Ave, EVERARD PARK | 3 |
| Jellicoe Ave, KINGS PARK | 5 |
| McLeary Park, PARKSIDE | 3 |
| Orphanage Park, MILLSWOOD | 12 |
| Ridge Park, MYRTLE BANK | 22 |
| Souter Park, GOODWOOD | 4 |
| <i>Unley Primary School, UNLEY*</i> | 11 |
| Wilberforce Walk, EVERARD PARK | 5 |
| Windsor St South, PARKSIDE | 8 |
| Windsor St, PARKSIDE | 7 |

* *Unley Primary School WBs installed November 2023.*

The WBs collectively included:

- 65 Brushtail possum boxes (BPB)
- 1 Ringtail possum box (RPB)
- 54 Medium parrot boxes (MPB)
- 50 Small parrot boxes (SPB)
- 4 Large parrot box (LPB)
- 2 Kookaburra boxes (KbB)
- 3 Pardalote boxes (PdB)
- 1 Boobook box (BbB)
- 15 Bat boxes (BtB)
- Plus, three WBs on private property.



Figure 8: Three Galah chicks in a medium parrot box (#044), at Forestville Res.

Fauna recorded during survey

Fauna recorded using the WBs, numerically and as a percentage, were well above average WBs *In Use* (Table 2) during 2023. The results were amongst the highest seen, representing the most successful year of recent times, possibly because the parrots nested early with the unusual weather, and our observation period was adjusted to measure this peak. Various fauna species used 106 WBs (60%; Figure 8), on at least one of the two servicing/monitoring days. Ninety-seven WBs were “In-Use” during Spring, 39 in Autumn, with nine “In-Use” during both observation periods.

Table 2: UCC Year-on-Year Comparison 2020-22

| Year | No. Wildlife Boxes “Available” | In Use ¹ | Used in Last 12 Months ² | Empty/Unused |
|----------|--------------------------------|---------------------|-------------------------------------|--------------|
| 2021 No. | 177 | 96 | 67 | 14 |
| 2021% | | 54.2% | 37.9% | 7.9% |
| 2022 No. | 183 | 85 | 83 | 15 |
| 2022% | | 46.4% | 45.4% | 8.2% |
| 2023 No. | 177 | 106 | 54 | 17 |
| 2023% | | 59.9% | 30.5% | 9.6% |
| | | 1: Full Year | 2: Exc. In use & Empty | |

Four different bird and two possum species were recorded. The maximum number of wildlife species observed using the WBs over the two periods included:

- Possums (individuals): 12 Common Brushtail (*Trichosurus vulpecula*) and eleven Common Ringtail (*Pseudocheirus peregrinus*) use various WBs in spring. Autumn

figures were slightly lower for both species. This represent high brushtail and typical Ringtail usage across the year.

- Birds: the WBs were inhabited by 64 pairs of Rainbow Lorikeets (*Trichoglossus haematodus*; Figure 9), 13 Galahs (*Eolophus roseicapilla*), four Eastern Rosellas (*Platycercus eximius*), and one Adelaide Rosella pair (*Platycercus elegans*). Collectively 160 chick and eggs were observed specifically associated with the WBs during the spring survey, which is a strong performance.



Figure 9: Two Rainbow Lorikeet chicks in a medium parrot box (#034), in Henry Codd.



Figure 10: Bat box (#025) with bat droppings, in Heywood Park.

- Bats: droppings were recorded in one Heywood Park bat box (#025, Figure 10)), spring 2023.

An additional, 56 (32%) WBs displayed evidence of activity (Used in the Last 12 Months) in spring and 102 (61%) in autumn, ranging from remains of eggs, chewing and scratching, disturbed bedding material, faecal matter, dead chicks, insect castings, fur and feather. Two WBs contained bees during the spring survey period, none of which housed the new metal/plastic ceilings, as part of the deterrent trial. The autumn 2023 survey, recorded just one feral bee hive, although removals preceded usual maintenance works.

Assessment was made on 183 WBs, available during the peak period of the year, in Spring. WBs “In Use” were well up compared to 2022, and even above 2021 which exhibited the highest historical usage recorded. WBs “Used in the Last 12 Months” were slightly on the low side compared to 2020 and 2021, which is understandable given the high “In Use” figure. When the “In Use” and “Used in the Last 12 Months” data are combined, the number of WBs used was marginally down on 2021, though still excellent at 91.4%. The overall numbers of parrot chicks observed (114) was very high, while the number of eggs observed (46), was similar to many of the recent years.

Wildlife Box Usage by Location

The larger parks contain between 9-27 WBs, with occupation rates combining 'In Use' and "Used in last 12 Months" realising 75-100% occupation. Almost 65% of the sites, when including both small and large parks, recorded 100% usage for the past year.

Cromer Pde contains 14 WBs. Rainbow Lorikeets, Galahs and Eastern Rosellas were all observed breeding. All boxes had been used across the year.

Forestville contains 15 usable WBs, of these nine (60%) were In Use and five (33%) had been Used in the Last 12 Months, with all except one having been used over the recording period. Rainbow Lorikeets, Galahs, Adelaide Rosellas and a Ringtail Possum (Figure 11) were all observed. One of the WBs was Empty/Unused.



Figure 11: Ringtail Possum in a small parrot box (#063), at Forestville.

Twelve WBs are installed in Orphanage Park, of these six (50%) were In Use when surveyed, including Rainbow Lorikeets, a Ringtail Possum and one a Brushtail Possum. Additionally, six WBs had been Used in the last 12 Months.

Goodwood Primary School contains 12 available WBs, of these seven (58%) were 'In Use' and four (33%) had been 'Used in the Last 12 Months'. Five pair of Rainbow Lorikeets were recorded, as well as a pair of Galahs (Figure 12).



Figure 12: Two Galah chicks in a medium parrot box (#054), at Goodwood Primary School.

Fifteen WBs are distributed along Windsor St (North & South), of these eight (53%) were In Use during spring and five Used in the previous 12 Months. Species recorded included Rainbow Lorikeets, Galahs and one pair of unidentified parrots.

Ridge Park contains 22 WBs, of this ten (45%) were In Use and seven (32%) had been used in the last 12 months. Three Ringtail Possums were observed during the spring survey, as well as one Brushtail Possum (Figure 13). Six pairs of Rainbow Lorikeets and a pair of Galahs were also recorded.

Eight WBs were In Use at Heywood Park over the spring survey period. Six Brushtail Possums were recorded during spring, which is a record for any park. An additional eight WBs, had been used by unidentified possums in the past 12 months. WBs also supported two pairs of Rainbow Lorikeets. Usage by Brushtail Possums may limit occupation by parrot species or Ringtail Possums. Bat droppings were also recorded in WBs (#025; Figure 10).

The WBs in the smaller locations across the city consist of mixed avian usage, including Rainbow Lorikeets, Galahs, Rosellas (Figure 14) and unidentified birds. Evidence of Brushtail and Ringtail Possums was also observed. Parrot nesting or roosting activity was recorded in the majority of WBs whether they were located in schools, streets or parks during the Spring period.

Four failed breeding events were observed in Spring 2023, the majority involved Rainbow Lorikeets, also one WB contained unidentified rosellas. The failure of parrot breeding events is relatively common in studies of wild populations, both in natural and artificial hollows.¹³ Recent local observations suggest that Galahs in particular, contribute to lorikeet and rosella nesting mortality.



Figure 14: Two Eastern Rosella chicks in a small parrot box (#065), at Blackwood Primary School.

Other Fauna

Marbled Gecko were found in or behind numerous boxes across both visits. They typically live under bark or in natural hollows and take advantage of WBs, when present, particularly if the boxes are not being used (Figure 15).

Spiders were recorded throughout the survey and are common in WBs, particularly Huntsmans (Sparassidae) using bat or pardalote boxes; where bird and possum movement is limited.

Bee hives were recorded in two WBs during in spring (Figure 16), and only in one box during autumn 2023. The spring hives will be removed, with bees being re-



Figure 13: Small parrot box (#007) in Ridge Park, with a Brushtail Possum in residence.

homed and the WBs replaced, during the 2024 maintenance period.

Parrot and possum WBs are extensively used. Specialist boxes for more difficult to attract or territorial species are by contrast, rarely used. Bats are occasional visitors to the boxes. A live bat has only ever been recorded in a single box, in any year. Bat droppings have been found relatively frequently, and bat droppings were recorded in a box at Heywood Park, in spring 2023 (Figure 14). Bat boxes



Figure 16: Bee hive in a medium parrot box (#071), at Black Forest Primary School.

represent the largest number of individual WBs, to be vacant annually. Kookaburra boxes (2) and pardalote boxes (3) were introduced in 2015, in an attempt to broaden species diversity, unfortunately to date neither of these boxes have been used by the target species.

Maintenance

All the WBs were in service during 2023. Various boxes are damaged by wildlife each year, with the two key situations necessitating replacement including: 1) compromised roof allowing water ingress, or 2) compromised door (hinge or securing pin). Three WBs have had their roofs damaged by

parrots, to the extent that they require replacement (Forestville Res., Goodwood Oval and Black Forest Primary School). An additional two WB requires replacement (unless they reside with UCC), due to the tree they were installed in, having been removed (Heywood Park). The replacement will occur during the autumn 2024 maintenance period.

Once bee hives are removed, these boxes similarly require replacement. Two WBs were observed containing hives during spring 2023.

Historically, a compromised WB floor would also require replacement. However, over the last few years the life of such boxes has been extended,



Figure 15: Marble Gecko in a bat box (#001), Ridge Park.

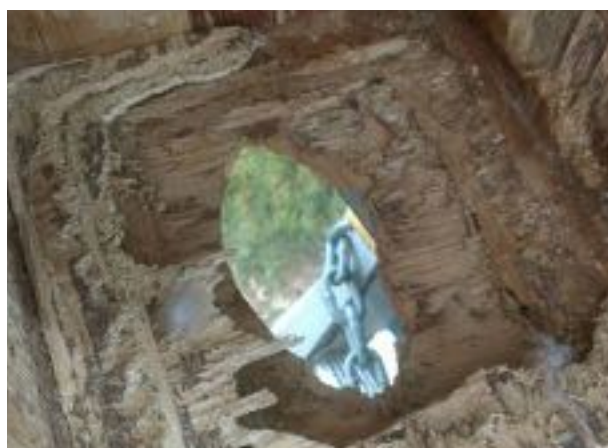


Figure 17: Damaged medium parrot box (#067), Black Forest Primary School, floor replaced.

where the rest of the box is sound. This has been achieved by inserting substitute floors, removing the need to replace the entire WB (e.g. Figure 17). Five WB floors were replaced during the spring 2023 survey period.

CONCLUSIONS & RECOMMENDATIONS

The approach UCC is taking continues to have a positive impact on the local hollow dependant wildlife. These WBs supply much-needed habitat for a range of wildlife species. This year has again been very successful, with over 91% of the available WBs being utilised over the previous 12 months (Table 2; Figures 18, 19 & 20). The WBs enhance local biodiversity and expose UCC residents to hollow dependant wildlife that are able to co-exist with us, across the City.

The numbers of WBs that are now installed across Unley is 197. This includes 162 WBs in council parks, reserves or verges, 32 in schools (Goodwood PS and Black Forest PS) and three on private property.

The WBs are serviced (& monitored) between February and May annually (when usage is at its lowest) and a second monitoring occurs during the September-November breeding peak, each year. Annual servicing will continue to maximise the safety and functionality of the WBs, minimise the impact to host trees and enable



Figure 18: Two Adelaide Rosella chicks & one egg in a possum box (#045), at Forestville Res.

WB damage or occupation by feral bees to be identified, so these resources can be maintained. This approach is working well and producing very successful results.

It is recommended reporting continues annually.

Feral bees are the second greatest threat to hollow dependant fauna, after habitat clearance. As recommended the two WBs with active hives (#104 Fullarton & #071 Black Forest PS), will simply be removed and replaced, following approval, as this approach is the most cost effective option. Again in 2024, the replacements will be furnished with either corflute or metal ceilings, as a trial to reduce uptake by feral bees.

Three WBs had deteriorated, due to wildlife or

time, to the point where they require replacement in 2024. These include one medium parrot (#149 Black Forest PS), one small parrot box (#091 Goodwood Oval) and one bat box (#066 Forestville). In most cases this is likely due to Galah damage.

Since 2017 *fauNature* has utilised an electronic recording system. The boxes are also 'located' on Google Maps, this information can be supplied in either hard copy or electronic form, as required (see Appendix C).

In 2020, Kat Ryan had discussed the possibility of expanding the WBs through the central section of the city, in conjunction with the local schools in the area. This was actioned in 2023, with Unley Primary installing eleven WBs across the school grounds. However, the central region of the city continues to be the most sparsely populated by artificial hollows.

The ongoing assessment continues to be very positive, which reinforces the strategy for enhancing wildlife by Unley Council. *fauNature*® would welcome the opportunity to investigate additional locations across the city where the installation of WBs is likely to increase the presence of native species, as this will be appreciated by wildlife and local residents alike.

fauNature® welcomes any questions regarding this report.



Figure 18: Four Ringtail Possum in a possum box (124), at Ridge Park.



Figure 19: Four Galah eggs, in a medium parrot box (#047), on Jellicoe Ave.

REFERENCES

1. Wildlife Box Monitoring and Evaluation Report for Unley City Council (2010).
2. Wildlife Box Monitoring and Evaluation Report for Unley City Council (2011).
3. Wildlife Box Monitoring and Evaluation Report for Unley City Council (2012).
4. Nest Box Monitoring and Evaluation Report for Unley City Council (2013).
5. Community Wildlife Project. Phase II - Wildlife Box Install (Feb 2014).
6. Nest Box Monitoring and Evaluation Report for Unley City Council (2014).
7. Nest Box Monitoring and Evaluation Report for Unley City Council (2015).
8. Nest Box Monitoring and Evaluation Report for Unley City Council (2016).
9. Wildlife Box Monitoring and Evaluation Report for Unley City Council (2017).
10. Wildlife Box Monitoring and Evaluation Report for Unley City Council (2018).
11. Wildlife Box Monitoring and Evaluation Report for Unley City Council (2019).
12. Wildlife Box Monitoring and Evaluation Report for Unley City Council (2020).
13. Wildlife Box Monitoring and Evaluation Report for Unley City Council (2021).
14. Wildlife Box Monitoring and Evaluation Report for Unley City Council (2021).

APPENDIX A: LOCATIONS

Unley Council - Wildlife Box Locations (2021)

| Tree Location | WB # | WB Type | Tree Type | WB Height | WB Orientation | Latitude | Longitude |
|----------------------------------|------|---------|-----------|-----------|----------------|------------|------------|
| Black Forest PS, BLACK FOREST | 65 | SPB | Eucalypt | 3 | E | -34.960438 | 138.574282 |
| Black Forest PS, BLACK FOREST | 67 | MPB | Eucalypt | 6 | E | -34.960772 | 138.572696 |
| Black Forest PS, BLACK FOREST | 68 | MPB | Eucalypt | 4 | SE | -34.960687 | 138.574882 |
| Black Forest PS, BLACK FOREST | 69 | SPB | Eucalypt | 6 | SE | -34.960679 | 138.572939 |
| Black Forest PS, BLACK FOREST | 70 | SPB | Eucalypt | 3 | E | -34.959336 | 138.575623 |
| Black Forest PS, BLACK FOREST | 71 | MPB | Eucalypt | 3 | S | -34.960131 | 138.576426 |
| Black Forest PS, BLACK FOREST | 72 | MPB | Eucalypt | 5 | SE | -34.960448 | 138.5761 |
| Black Forest PS, BLACK FOREST | 148 | SPB | Eucalypt | 4 | E | -34.96041 | 138.576352 |
| Black Forest PS, BLACK FOREST | 149 | MPB | Eucalypt | 5 | SE | -34.95932 | 138.575998 |
| Crommer Pde, MILLSWOOD | 75 | BPB | Eucalypt | 4 | SE | -34.959417 | 138.582833 |
| Crommer Pde, MILLSWOOD | 79 | SPB | Eucalypt | 3 | S | -34.955083 | 138.586483 |
| Crommer Pde, MILLSWOOD | 80 | MPB | Eucalypt | 4 | SE | -34.956 | 138.58645 |
| Crommer Pde, MILLSWOOD | 81 | SPB | Eucalypt | 3 | S | -34.956167 | 138.586383 |
| Crommer Pde, MILLSWOOD | 82 | MPB | Eucalypt | 3 | SE | -34.95645 | 138.58625 |
| Crommer Pde, MILLSWOOD | 83 | SPB | Eucalypt | 3 | S | -34.956817 | 138.586 |
| Crommer Pde, MILLSWOOD | 84 | MPB | Eucalypt | 4 | SE | -34.957033 | 138.585783 |
| Crommer Pde, MILLSWOOD | 85 | SPB | Eucalypt | 3 | SE | -34.957133 | 138.58565 |
| Crommer Pde, MILLSWOOD | 86 | MPB | Eucalypt | 3 | E | -34.95745 | 138.585317 |
| Crommer Pde, MILLSWOOD | 87 | SPB | Eucalypt | 4 | SE | -34.957583 | 138.58515 |
| Crommer Pde, MILLSWOOD | 88 | MPB | Eucalypt | 3 | E | -34.958659 | 138.58377 |
| Crommer Pde, MILLSWOOD | 89 | SPB | Eucalypt | 4 | SE | -34.95885 | 138.58355 |
| Crommer Pde, MILLSWOOD | 90 | BPB | Eucalypt | 4 | E | -34.9589 | 138.583383 |
| Crommer Pde, MILLSWOOD | 91 | SPB | Eucalypt | | SE | -34.959483 | 138.582883 |
| Devon St & Railway Tce, GOODWOOD | 73 | BPB | Eucalypt | 4 | S | -34.952734 | 138.585833 |
| Devon St & Railway Tce, GOODWOOD | 74 | BPB | Private | | | -34.952635 | 138.586311 |
| Devon St & Railway Tce, GOODWOOD | 76 | BPB | Eucalypt | 6 | E | -34.951801 | 138.58569 |

| | | | | | | | |
|----------------------------------|-----|-----|----------|---|----|------------|------------|
| Devon St & Railway Tce, GOODWOOD | 77 | BPB | Eucalypt | 4 | E | -34.951621 | 138.585935 |
| Devon St & Railway Tce, GOODWOOD | 78 | MPB | Eucalypt | 5 | E | -34.952764 | 138.585868 |
| Ferguson Ave, MYRTLE BANK | 134 | SPB | Eucalypt | 6 | SE | -34.960065 | 138.633762 |
| Ferguson Ave, MYRTLE BANK | 135 | SPB | Eucalypt | 8 | E | -34.959854 | 138.633859 |
| Ferguson Ave, MYRTLE BANK | 136 | BPB | Eucalypt | 5 | SE | -34.959682 | 138.633314 |
| Ferguson Ave, MYRTLE BANK | 137 | BPB | Eucalypt | 5 | SE | -34.959573 | 138.632668 |
| Ferguson Ave, MYRTLE BANK | 138 | SPB | Eucalypt | 7 | SE | -34.959379 | 138.632637 |
| Forestville Res.,GOODWOOD | 38 | MPB | Eucalypt | 5 | SE | -34.95247 | 138.583702 |
| Forestville Res.,GOODWOOD | 39 | MPB | Eucalypt | 5 | SE | -34.952383 | 138.584083 |
| Forestville Res.,GOODWOOD | 40 | BbB | Eucalypt | 6 | SE | -34.95225 | 138.58415 |
| Forestville Res.,GOODWOOD | 41 | MPB | Eucalypt | 5 | SE | -34.952383 | 138.583817 |
| Forestville Res.,GOODWOOD | 42 | MPB | Eucalypt | 4 | S | -34.951414 | 138.583405 |
| Forestville Res.,GOODWOOD | 43 | SPB | Eucalypt | 5 | SE | -34.952383 | 138.58355 |
| Forestville Res.,GOODWOOD | 44 | MPB | Eucalypt | 5 | SE | -34.9519 | 138.5836 |
| Forestville Res.,GOODWOOD | 45 | BPB | Eucalypt | 5 | SE | -34.951917 | 138.58395 |
| Forestville Res.,GOODWOOD | 58 | MPB | Eucalypt | 5 | S | -34.951983 | 138.583817 |
| Forestville Res.,GOODWOOD | 59 | SPB | Eucalypt | 5 | S | -34.951517 | 138.5836 |
| Forestville Res.,GOODWOOD | 60 | SPB | Eucalypt | 4 | S | -34.952083 | 138.584167 |
| Forestville Res.,GOODWOOD | 61 | MPB | Eucalypt | 4 | S | -34.950867 | 138.58455 |
| Forestville Res.,GOODWOOD | 62 | BPB | Eucalypt | 5 | S | -34.9511 | 138.58445 |
| Forestville Res.,GOODWOOD | 63 | SPB | Eucalypt | 4 | S | -34.951183 | 138.584567 |
| Forestville Res.,GOODWOOD | 64 | BPB | Eucalypt | 6 | E | -34.951767 | 138.58415 |
| Forestville Res.,GOODWOOD | 66 | BtB | Eucalypt | 6 | NW | -34.952233 | 138.5838 |
| Fullarton Park, FULLARTON | 95 | BPB | Other | 5 | E | -34.957924 | 138.625207 |
| Fullarton Park, FULLARTON | 96 | BPB | Other | 4 | E | -34.958045 | 138.624557 |
| Fullarton Park, FULLARTON | 97 | BPB | Pine | 4 | E | -34.957913 | 138.624832 |
| Fullarton Park, FULLARTON | 98 | BPB | Eucalypt | 4 | E | -34.958382 | 138.624637 |
| Fullarton Park, FULLARTON | 99 | BPB | Other | 6 | SE | -34.957602 | 138.624525 |
| Fullarton Park, FULLARTON | 100 | BPB | Eucalypt | 6 | SE | -34.957433 | 138.62471 |
| Fullarton Park, FULLARTON | 101 | BPB | Eucalypt | 3 | S | -34.95801 | 138.625794 |
| Fullarton Park, FULLARTON | 102 | BPB | Other | 3 | SW | -34.958225 | 138.625256 |
| Fullarton Park, FULLARTON | 103 | BPB | Eucalypt | 5 | E | -34.957684 | 138.624897 |
| Fullarton Park, FULLARTON | 104 | BPB | Other | 4 | N | -34.95761 | 138.625036 |
| Goodwood Oval, GOODWOOD | 92 | MPB | Eucalypt | 5 | E | -34.956849 | 138.583217 |

| | | | | | | | |
|--------------------------|-----|-----|----------|---|----|-------------|-------------|
| Goodwood Oval, GOODWOOD | 93 | SPB | Eucalypt | 5 | E | -34.956707 | 138.582733 |
| Goodwood Oval, GOODWOOD | 94 | BPB | Eucalypt | 5 | E | -34.956408 | 138.582721 |
| Goodwood Oval, GOODWOOD | 170 | BtB | Eucalypt | 4 | N | -34.9564327 | 138.5840993 |
| Goodwood Oval, GOODWOOD | 171 | BtB | Eucalypt | 4 | NW | -34.9563894 | 138.5837153 |
| Goodwood Oval, GOODWOOD | 172 | BPB | Eucalypt | 6 | SE | -34.9562982 | 138.5841999 |
| Goodwood Oval, GOODWOOD | 173 | SPB | Eucalypt | 5 | SE | -34.9557924 | 138.5843968 |
| Goodwood Oval, GOODWOOD | 174 | MPB | Eucalypt | 6 | E | -34.9563499 | 138.584237 |
| Goodwood Oval, GOODWOOD | 175 | SPB | Eucalypt | 6 | SE | -34.955983 | 138.5840285 |
| Goodwood Oval, GOODWOOD | 176 | LPB | Eucalypt | 8 | E | -34.9565046 | 138.5841977 |
| Goodwood Oval, GOODWOOD | 177 | MPB | Eucalypt | 6 | SE | -34.9558251 | 138.5836719 |
| Goodwood Oval, GOODWOOD | 178 | BPB | Eucalypt | 6 | SE | -34.9552783 | 138.5834353 |
| Goodwood Oval, GOODWOOD | 179 | BPB | | 4 | SE | -34.9550896 | 138.5830146 |
| Goodwood Oval, GOODWOOD | 180 | LPB | Eucalypt | 6 | E | -34.9566961 | 138.5831932 |
| Goodwood Oval, GOODWOOD | 181 | BPB | Eucalypt | 4 | E | -34.9558523 | 138.5829813 |
| Goodwood PS, GOODWOOD | 53 | MPB | Eucalypt | 3 | E | -34.9521918 | 138.587252 |
| Goodwood PS, GOODWOOD | 54 | MPB | Eucalypt | 3 | SE | -34.951667 | 138.589517 |
| Goodwood PS, GOODWOOD | 55 | MPB | Eucalypt | 5 | S | -34.951 | 138.588467 |
| Goodwood PS, GOODWOOD | 56 | SPB | Eucalypt | 6 | E | -34.951617 | 138.58845 |
| Goodwood PS, GOODWOOD | 158 | SPB | Other | 5 | SE | -34.9514288 | 138.5890692 |
| Goodwood PS, GOODWOOD | 159 | MPB | Other | 6 | SE | -34.9518224 | 138.5895252 |
| Goodwood PS, GOODWOOD | 160 | MPB | Eucalypt | 4 | SE | -34.9518289 | 138.5892838 |
| Goodwood PS, GOODWOOD | 161 | MPB | Other | 4 | SE | -34.9518465 | 138.5890585 |
| Goodwood PS, GOODWOOD | 162 | SPB | Other | 4 | S | -34.9520312 | 138.5886884 |
| Goodwood PS, GOODWOOD | 163 | BPB | Eucalypt | 5 | S | -34.9520378 | 138.5884604 |
| Goodwood PS, GOODWOOD | 164 | BPB | Eucalypt | 6 | SE | -34.9516047 | 138.5884604 |
| Goodwood PS, GOODWOOD | 165 | SPB | Other | 5 | SE | -34.9521961 | 138.587468 |
| Henry Codd, PARKSIDE | 34 | MPB | Eucalypt | 7 | S | -34.946867 | 138.616133 |
| Henry Codd, PARKSIDE | 35 | SPB | Eucalypt | 5 | SE | -34.947317 | 138.616233 |
| Heywood Park, UNLEY PARK | 19 | BPB | Other | 5 | S | -34.961683 | 138.599783 |
| Heywood Park, UNLEY PARK | 20 | SPB | Eucalypt | 5 | E | -34.961483 | 138.59965 |
| Heywood Park, UNLEY PARK | 21 | MPB | Eucalypt | 5 | E | -34.961 | 138.599883 |
| Heywood Park, UNLEY PARK | 22 | BPB | Eucalypt | 6 | NE | -34.960967 | 138.599767 |
| Heywood Park, UNLEY PARK | 23 | SPB | Eucalypt | 5 | SE | -34.960747 | 138.599758 |
| Heywood Park, UNLEY PARK | 24 | BPB | Eucalypt | | SE | -34.961123 | 138.602059 |
| Heywood Park, UNLEY PARK | 25 | BtB | Eucalypt | 4 | N | -34.961217 | 138.602083 |

| | | | | | | | |
|----------------------------|-----|-----|----------|---|----|-------------|-------------|
| Heywood Park, UNLEY PARK | 26 | BtB | Eucalypt | 4 | NW | -34.96155 | 138.602083 |
| Heywood Park, UNLEY PARK | 27 | BtB | Eucalypt | 4 | N | -34.96155 | 138.602083 |
| Heywood Park, UNLEY PARK | 28 | BPB | Eucalypt | 3 | SE | -34.960881 | 138.602167 |
| Heywood Park, UNLEY PARK | 29 | | | | | -34.963611 | 138.601628 |
| Heywood Park, UNLEY PARK | 30 | | | | | -34.963703 | 138.601669 |
| Heywood Park, UNLEY PARK | 105 | BPB | Other | 3 | E | -34.96089 | 138.601276 |
| Heywood Park, UNLEY PARK | 106 | BPB | Eucalypt | | SE | -34.96055 | 138.601579 |
| Heywood Park, UNLEY PARK | 107 | LPB | Eucalypt | 8 | SE | -34.960606 | 138.601619 |
| Heywood Park, UNLEY PARK | 108 | MPB | Eucalypt | 4 | SE | -34.96155 | 138.602083 |
| Heywood Park, UNLEY PARK | 109 | KbB | Eucalypt | 6 | NE | -34.96055 | 138.601883 |
| Heywood Park, UNLEY PARK | 110 | PdB | Eucalypt | 6 | SE | -34.96055 | 138.601883 |
| Heywood Park, UNLEY PARK | 111 | BtB | Eucalypt | 5 | W | -34.960617 | 138.602 |
| Heywood Park, UNLEY PARK | 112 | BtB | Eucalypt | 5 | W | -34.960617 | 138.602 |
| Heywood Park, UNLEY PARK | 113 | MPB | Eucalypt | 5 | SE | -34.960617 | 138.602 |
| Heywood Park, UNLEY PARK | 114 | BPB | Eucalypt | 5 | E | -34.960633 | 138.601967 |
| Heywood Park, UNLEY PARK | 115 | BPB | Eucalypt | 5 | S | -34.960917 | 138.602067 |
| Heywood Park, UNLEY PARK | 116 | BPB | Eucalypt | 4 | SE | -34.961 | 138.60205 |
| Heywood Park, UNLEY PARK | 117 | BPB | Eucalypt | 4 | E | -34.961183 | 138.602017 |
| Heywood Park, UNLEY PARK | 118 | PdB | Eucalypt | 3 | SE | -34.961183 | 138.602017 |
| Heywood Park, UNLEY PARK | 119 | LPB | Eucalypt | 5 | E | -34.96165 | 138.602133 |
| Heywood Park, UNLEY PARK | 120 | PdB | Eucalypt | 5 | SE | -34.961733 | 138.602133 |
| Heywood Park, UNLEY PARK | 121 | KbB | Eucalypt | 6 | E | -34.961733 | 138.602133 |
| Hillsley Ave, EVERARD PARK | 49 | MPB | Eucalypt | 5 | SE | -34.952384 | 138.575094 |
| Hillsley Ave, EVERARD PARK | 50 | MPB | Eucalypt | 5 | SE | -34.952772 | 138.575129 |
| Hillsley Ave, EVERARD PARK | 131 | SPB | Eucalypt | 5 | E | -34.952593 | 138.574855 |
| Jellicoe Ave, KINGS PARK | 46 | MPB | Eucalypt | 5 | SE | -34.964789 | 138.596032 |
| Jellicoe Ave, KINGS PARK | 47 | MPB | Eucalypt | 5 | E | -34.96445 | 138.595676 |
| Jellicoe Ave, KINGS PARK | 48 | BPB | Eucalypt | 6 | SE | -34.964181 | 138.595332 |
| Jellicoe Ave, KINGS PARK | 129 | BPB | Eucalypt | 6 | SE | -34.9646696 | 138.5958644 |
| Jellicoe Ave, KINGS PARK | 130 | MPB | Eucalypt | 5 | E | -34.964068 | 138.5958644 |
| McLeary Park, PARKSIDE | 31 | MPB | Eucalypt | 5 | SE | -34.942533 | 138.612983 |
| McLeary Park, PARKSIDE | 32 | MPB | Eucalypt | 5 | SE | -34.942683 | 138.613 |
| McLeary Park, PARKSIDE | 33 | BPB | Eucalypt | 5 | E | -34.942589 | 138.613775 |
| Orphanage Park, Millswood | 57 | SPB | Eucalypt | 5 | SE | -34.956413 | 138.591746 |
| Orphanage Park, Millswood | 139 | BPB | Pine | 5 | SE | -34.957154 | 138.592204 |

| | | | | | | | |
|---------------------------|-----|-----|----------|---|----|--------------|-------------|
| Orphanage Park, Millswood | 140 | SPB | Pine | 5 | SE | -34.956994 | 138.592814 |
| Orphanage Park, Millswood | 141 | BPB | Eucalypt | 5 | E | -34.957186 | 138.593095 |
| Orphanage Park, Millswood | 142 | BPB | Eucalypt | 5 | SE | -34.956602 | 138.592315 |
| Orphanage Park, Millswood | 143 | MPB | Other | 4 | SE | -34.956506 | 138.59221 |
| Orphanage Park, Millswood | 144 | BPB | Pine | 5 | SE | -34.956066 | 138.592092 |
| Orphanage Park, Millswood | 145 | SPB | Eucalypt | 5 | E | -34.95684 | 138.592217 |
| Orphanage Park, Millswood | 146 | SPB | Pine | 5 | SE | -34.95582 | 138.591891 |
| Orphanage Park, Millswood | 147 | MPB | Eucalypt | 7 | E | -34.956167 | 138.592096 |
| Orphanage Park, Millswood | 166 | BPB | Pine | 6 | SE | -34.9572875 | 138.5917193 |
| Orphanage Park, Millswood | 167 | BPB | Eucalypt | 5 | SE | -34.9573104 | 138.5915885 |
| Ridge Park, MYRTLE BANK | 1 | BtB | Eucalypt | 4 | N | -34.96038 | 138.63993 |
| Ridge Park, MYRTLE BANK | 2 | BtB | Eucalypt | 4 | N | -34.96035 | 138.6399 |
| Ridge Park, MYRTLE BANK | 3 | MPB | Eucalypt | 4 | SE | -34.96032 | 138.63987 |
| Ridge Park, MYRTLE BANK | 4 | BPB | Eucalypt | 5 | SE | -34.96023333 | 138.64025 |
| Ridge Park, MYRTLE BANK | 5 | MPB | Eucalypt | 5 | SE | -34.9602 | 138.6402667 |
| Ridge Park, MYRTLE BANK | 6 | SPB | Eucalypt | 5 | SE | -34.96003333 | 138.6408833 |
| Ridge Park, MYRTLE BANK | 7 | SPB | Eucalypt | 5 | S | -34.96001667 | 138.64095 |
| Ridge Park, MYRTLE BANK | 8 | BPB | Eucalypt | 5 | S | -34.96026667 | 138.6412833 |
| Ridge Park, MYRTLE BANK | 9 | MPB | Eucalypt | 5 | SE | -34.96033333 | 138.64135 |
| Ridge Park, MYRTLE BANK | 10 | SPB | Eucalypt | 5 | S | -34.96065 | 138.64165 |
| Ridge Park, MYRTLE BANK | 11 | BtB | Eucalypt | 4 | N | -34.9613 | 138.640783 |
| Ridge Park, MYRTLE BANK | 12 | BtB | Eucalypt | 4 | N | -34.96133 | 138.64075 |
| Ridge Park, MYRTLE BANK | 13 | MPB | Eucalypt | 4 | E | -34.9612934 | 138.6402704 |
| Ridge Park, MYRTLE BANK | 14 | BPB | Eucalypt | 5 | S | -34.961856 | 138.640287 |
| Ridge Park, MYRTLE BANK | 15 | BPB | Eucalypt | 6 | SE | -34.961483 | 138.639717 |
| Ridge Park, MYRTLE BANK | 16 | BtB | Eucalypt | 4 | N | -34.960983 | 138.639117 |
| Ridge Park, MYRTLE BANK | 17 | BPB | Other | 6 | E | -34.960717 | 138.639709 |
| Ridge Park, MYRTLE BANK | 122 | BPB | Eucalypt | 5 | SE | -34.960748 | 138.6395536 |
| Ridge Park, MYRTLE BANK | 123 | BPB | Eucalypt | 7 | E | -34.9622458 | 138.6401214 |
| Ridge Park, MYRTLE BANK | 124 | BPB | Eucalypt | 5 | SE | -34.9617872 | 138.6392501 |
| Ridge Park, MYRTLE BANK | 168 | SPB | Eucalypt | 6 | SE | -34.9613004 | 138.6415567 |
| Ridge Park, MYRTLE BANK | 169 | SPB | Eucalypt | 6 | SE | -34.9621182 | 138.6400546 |
| Ridge Park, MYRTLE BANK | 197 | BPB | Eucalypt | 5 | E | -34.9610559 | 138.6387786 |
| Souter Park, GOODWOOD | 51 | SPB | Other | 6 | SE | -34.949641 | 138.593647 |
| Souter Park, GOODWOOD | 52 | MPB | Other | 5 | SE | -34.949669 | 138.593314 |

| | | | | | | | |
|--------------------------------|-----|-----|----------|---|----|-------------|-------------|
| Souter Park, GOODWOOD | 132 | BPB | Eucalypt | 4 | E | -34.950378 | 138.593008 |
| Souter Park, GOODWOOD | 133 | MPB | Other | 4 | SE | -34.950354 | 138.593432 |
| Unley Primary School, UNLEY | 187 | BPB | Other | 4 | E | -34.9537891 | 138.608909 |
| Unley Primary School, UNLEY | 188 | BtB | Eucalypt | 4 | W | -34.9537592 | 138.6090913 |
| Unley Primary School, UNLEY | 189 | BtB | Eucalypt | 4 | NW | -34.9537183 | 138.6090985 |
| Unley Primary School, UNLEY | 190 | MPB | Eucalypt | 5 | SE | -34.9537454 | 138.6091393 |
| Unley Primary School, UNLEY | 191 | MPB | Eucalypt | 5 | E | -34.9537194 | 138.6095487 |
| Unley Primary School, UNLEY | 192 | SPB | Other | 4 | NE | -34.9543444 | 138.609794 |
| Unley Primary School, UNLEY | 193 | SPB | Eucalypt | 5 | NW | -34.9538761 | 138.6099261 |
| Unley Primary School, UNLEY | 194 | SPB | Eucalypt | 6 | E | -34.9537744 | 138.6099334 |
| Unley Primary School, UNLEY | 195 | SPB | Eucalypt | 5 | E | -34.9535957 | 138.6099119 |
| Unley Primary School, UNLEY | 196 | BPB | Other | 5 | E | -34.9534569 | 138.6107869 |
| Unley Primary School, UNLEY | 197 | BPB | Eucalypt | 4 | SE | -34.9540804 | 138.6093999 |
| Wilberforce Walk, Everard Park | 182 | MPB | Eucalypt | 5 | SE | -34.9505489 | 138.5810459 |
| Wilberforce Walk, Everard Park | 183 | SPB | Eucalypt | 5 | E | -34.9505674 | 138.5807276 |
| Wilberforce Walk, Everard Park | 184 | BPB | Other | 4 | E | -34.9505823 | 138.5804795 |
| Wilberforce Walk, Everard Park | 185 | SPB | Other | 5 | E | -34.9505916 | 138.5803192 |
| Wilberforce Walk, Everard Park | 186 | BPB | Other | 5 | E | -34.9505977 | 138.5802012 |
| Windsor St South, PARKSIDE | 150 | BPB | Eucalypt | 5 | SW | -34.9548578 | 138.6167319 |
| Windsor St South, PARKSIDE | 151 | MPB | Eucalypt | 5 | E | -34.954887 | 138.61671 |
| Windsor St South, PARKSIDE | 152 | MPB | Eucalypt | 5 | SE | -34.955412 | 138.616753 |
| Windsor St South, PARKSIDE | 153 | BPB | Eucalypt | 7 | SE | -34.955638 | 138.616854 |
| Windsor St South, PARKSIDE | 154 | MPB | Eucalypt | 6 | SE | -34.955699 | 138.616917 |
| Windsor St South, PARKSIDE | 155 | BPB | Eucalypt | 7 | SE | -34.955643 | 138.617434 |
| Windsor St South, PARKSIDE | 156 | SPB | Eucalypt | 5 | SE | -34.955928 | 138.616861 |
| Windsor St South, PARKSIDE | 157 | SPB | Eucalypt | 6 | S | -34.95615 | 138.616839 |
| Windsor St, PARKSIDE | 18 | SPB | Eucalypt | 6 | SE | -34.950083 | 138.61633 |
| Windsor St, PARKSIDE | 36 | MPB | Eucalypt | 5 | SE | -34.94845 | 138.616233 |
| Windsor St, PARKSIDE | 37 | SPB | Eucalypt | 4 | N | -34.9505112 | 138.6163296 |
| Windsor St, PARKSIDE | 125 | SPB | Eucalypt | 5 | SE | -34.947943 | 138.616176 |
| Windsor St, PARKSIDE | 126 | MPB | Eucalypt | 4 | SE | -34.949048 | 138.616298 |
| Windsor St, PARKSIDE | 127 | BPB | Eucalypt | 4 | SE | -34.950264 | 138.616298 |
| Windsor St, PARKSIDE | 128 | BPB | Eucalypt | 6 | SE | -34.951257 | 138.616421 |

APPENDIX B: PHOTO SUMMARY

Unley Council - Selected wildlife box observational records (2021).



No. 006: Ringtail Possum - medium parrot box, Ridge Park.



No. 0078: Rainbow Lorikeet eggs - small parrot box, Ridge Park.



No. 023: Brushtail Possum - small parrot box, Heywood Park.



No. 032: Rainbow Lorikeet chicks - medium parrot box, McLeary Park.



No. 049: Two Galah chicks - medium parrot box, Everard Park Res.



No. 052: Two Rainbow Lorikeet chicks - medium parrot box, Souter Park.



No. 072: Rainbow Lorikeet chicks - medium parrot box, Black Forest Primary School.



No. 093: Eastern Rosella eggs - small parrot box, Goodwood Oval.



No. 130: Brushstail Possum in a medium parrot box, Jellicoe Ave.



No. 149: Three Galah chicks in a medium parrot box, Black Forest Primary School.



No. 164: Mud wasps nest in a possum box, Goodwood Primary School.



No. 164: Rainbow Lorikeet chick & egg in a small parrot box, Wilberforce Walk.

APPENDIX C: GOOGLE MAP

Unley City Council - Mapped locations for wildlife boxes (2022).

