

---

# WILDLIFE BOX - REPORT

City of Unley - Monitoring and Servicing for 2021

---



*Two Boobook Owl chicks, in a possum box (#040), at Forestville Reserve.*

*All photos contained within this report were taken during 2022, associated with surveying or maintenance activities, unless otherwise noted.*

Report produced by James Smith, **fauNature®** May 2023.



---

# TABLE OF CONTENTS

---

WILDLIFE BOX - REPORT	1
TABLE OF CONTENTS	2
SUMMARY	3
HISTORICAL DEVELOPMENTS	4
LOCATION & IDENTIFICATION	6
ARTIFICIAL HOLLOW USAGE	8
<i>Fauna recorded during survey</i>	9
<i>Wildlife Box Usage by Location</i>	10
<i>Other Fauna</i>	12
<i>Maintenance</i>	13
CONCLUSIONS & RECOMMENDATIONS	14
REFERENCES	16
APPENDIX A: LOCATIONS	17
APPENDIX B: PHOTO SUMMARY	23
APPENDIX C: GOOGLE MAP	25

*A Brushtail Possum, in a possum box (#109), in Heywood Park.*



# SUMMARY

The City of Unley's wildlife box programme has been operating since 2009. The wildlife boxes were designed, together with the council's indigenous planting programme, to support biodiversity across the city. The aim of the programme is to enhance habitat for, and management of hollow dependent urban fauna, within the city.

This report details the wildlife and maintenance activities that took place during 2022. The boxes were serviced during April-May 2022, then surveyed for breeding activity in October-November 2022.

One hundred and eighty-three boxes were serviced/surveyed. The wildlife boxes are located within council parks, in street trees, on school grounds, community centres and private homes across the city.

The Wildlife Box Programme has enjoyed another strong year in 2022. "In Use" occupancy was 46%, over the survey periods. Total box activity of 92% was recorded, when 'In Use' over the year and 'Used in Last 12 Months' are considered together (Table 2; page 9). The "In Use" is below the peak usage seen in 2021, though total usage is consistent with the high rate of occupancy observed over the last five years.

The numbers of Rainbow Lorikeets (Figure 1), Galahs and Rosellas, using wildlife boxes during 2022, were all strong. Total numbers of eggs and chicks were high, with 56 and 102, observed respectively for the year. A Boobook Owl nesting event was recorded for the first time in spring 2022 (cover page). Brushtail Possum numbers were at high levels in autumn and spring, while Ringtails numbers were reasonable with eight recorded in autumn.

The program maintained its wildlife box numbers from the previous 12 months.

The Wildlife Box Program has supported high numbers of native species and also allowed Unley residents to observe, appreciate and even learn a little more about the city's wildlife. The programme continues to assist the City of Unley in meeting its biodiversity objectives.



*Figure 1: Two Rainbow Lorikeet chicks, in a brushtail box (#136), Ferguson Ave.*

# HISTORICAL DEVELOPMENTS



*Figure 2: Montage of student painted WBs from DPTI Install phase (2013).*

Unley Council (UCC) engaged **fauNature®** to install, then subsequently service and monitor artificial hollows/wildlife boxes (WBs) across the city. The installations were staged in phases over a decade, and the activities associated with the WBs has been reported on annually.

The first Installations took place in May 2009. Initially 28 boxes were placed in Ridge and Heywood Parks, with a single box on Windsor St, Parkside. These WBs were monitored and serviced for the next two years, with progress reports submitted in 2010<sup>1</sup> and 2011<sup>2</sup>.

The Wildlife Box Monitoring and Evaluation Reports<sup>1,2</sup> were presented to the elected members, who endorsed an expansion of the programme. An additional 24 WBs were installed, across the city during 2012 (Figure 3), and a report detailing monitoring and maintenance activities for the year was submitted<sup>3</sup>.



*Figure 3: Early Install (2012), a*

During 2013 the Department for Planning, Transport and Infrastructure (DPTI) approached **fauNature®** to deliver a number of Wildlife Box Building Workshops. These workshops and associated activities, undertaken by local primary school students, produced an additional 42 WBs, which were installed in late 2013 (Figure 2 & 6). Once installed, the majority of the boxes became the property of Unley Council; further details can be found in the Wildlife Box Monitoring and Evaluation Report<sup>4</sup> (2013) and DPTI - Community Wildlife Project report.<sup>5</sup>



In late 2013 UCC added the management of ten brushtail boxes in Fullarton Park, installed some years previously by a pest controller, to the ongoing WBs program; further details can be found in the Wildlife Box Monitoring and Evaluation Report<sup>6</sup> (2014).

Habitat enhancement in Heywood Park, together with the need to protect remnant grey box (*Eucalyptus macrocarpa*) saw an additional 17 WBs installed in August 2015. These boxes included the traditional brushtail, medium parrot and bat boxes, but also large parrot, kookaburra and pardalote boxes (Figure 4), installed in the interests of increasing biodiversity. The total number of WBs associated with the Unley Wildlife Box Program then stood 124. These were included in the 2015 and 2016 Monitoring and Evaluation Reports<sup>7, 8</sup>.



Figure 4: Pardalote (#120) boxes at Heywood Park.

Opportunities for expanding the WB program were identified during 2016/17. Using biodiversity off-set stock, from the Ferguson Ave tree replacement project, 25 WBS were installed, primarily off Ferguson Ave (5; Myrtle Bank) and in Orphanage Park (11; Goodwood), with the remainder added to the smaller parks across the city. Resident requests also prompted the install of eight boxes in the park off Fern Ave (Fullarton) and along Windsor St South. The 2017 Monitoring and Evaluation Report<sup>9</sup> recorded a total of 157 WBs in-service across the city.

The City of Unley Biodiversity Officer (Kat Ryan) supported a wildlife box building project undertaken at Goodwood Primary School during Terms 3 & 4, 2017. The majority of these WBs were installed within the school grounds (8), with the rest installed in Orphanage Park (2), in June 2018. A total of 167 WBs were in-service across the City of Unley in 2018<sup>10</sup>.

UCC were approached by a resident in Myrtle Bank, and were gifted two small parrot boxes. These WBs were installed in Ridge Park (June 2019), at the request of Joel Ashforth. A second resident near Goodwood Oval, offered to pay for a couple of large parrot boxes, providing memorial plaques to be attached. In conjunction with this offer, Kate Ryan had Goodwood Primary School produce another 10 WBs, and paint all 12 for installation. Construction took place in May 2019, with install in August/October 2019, bringing the number of boxes to 178<sup>11</sup>.

Five additional WBs were added in early 2020, to Wilberforce Walk in Everard Park, through the Biodiversity Officer. The total number of WBs across the City of Unley, now stands at 186 - wildlife box reports 2020.<sup>12</sup> No WBs were added in 2021/2022.<sup>13</sup>

# LOCATION & IDENTIFICATION

One-hundred and eighty-six WBs are currently installed across the UCC and it is essential to keep track of these assets. For each WB, the following information has been recorded: location (park/road), box type, box orientation, tree type, box height, GPS coordinates and a unique identifying number (Appendix A).

During the 2017 survey period the replacement of the identification numbers commenced, using a formally designed numbering system (Figure 5). This process was completed during 2018 and will be included for future installations.

Most of the WBs are painted a pale green (Figure 5). By contrast, the boxes constructed with the assistance of local Goodwood and Black Forest Primary School students have been

individually decorated, so each is unique in its own way, as can be seen from the collection of images displayed (Figures 2 & 6).



*Figure 5: Identification number (#110) on a pardalote box, in*



*Figure 6: Identification number, on a painted possum box (#064), in Forestville Reserve.*

The WBs are well distributed across the city, having been installed in 19 locations from Ridge Park in the East to Black Forest Primary School in the West and McLeary Reserve in the north to Jellicoe Avenue in the South. Numbers vary between locations, from a high of 27 in Heywood Park to a low of three in Everard Park Reserve. If there are locations that are under-represented, it is the central and central-northern sections of the city.

GPS coordinates/locations are recorded for each box (e.g. -34.96059S : 138.60158E) to ensure council staff or contractors can locate the boxes, as necessary (Appendix A).

# MONITORING & MAINTENANCE

Specific wildlife observations were made for each WBs. Additionally, general wildlife observations were made for the area where the WBs are located. Species present are noted, particularly those utilising these WB resources.

The servicing and monitoring processes involve the WBs being inspected, initially from the ground, then at the height of the WB externally and finally internally. The WBs are assessed for evidence of use by wildlife, as well as overall condition (Figure 7). Details of the findings are recorded.

Maintenance for WBs is recommended once per year, to ensure WBs offer:

- 1) A safe resource for both people and wildlife;
- 2) Minimise potential impact on the tree;
- 3) Maximise the useful life of the WB.



*Figure 7: Possum box (#102) at Heywood Park, containing three Galah eggs.*

February to May is an ideal time to service the WBs, as by this time most birds will have completed their nesting and annual usage will be at its lowest. Maintenance activities were undertaken in April-May 2022. Species like Brushtail Possums or micro-bats may be present year round, so while servicing can still be undertaken, it might only be partially completed. When there is fauna occupying a WB, additional precautions are taken.

During maintenance work, besides recording wildlife activity, the WBs are cleaned out, and where necessary, new nesting material is added. The securing mechanisms for the WBs are also adjusted, to allow for tree growth and to maximise safety.

Monitoring surveys for the WBs take place during spring (Sept-Nov), so assessment is made during the period of highest nesting activity. These activities were undertaken in October-November 2022.

Photographs are taken during both monitoring and maintenance activities. These highlight the various signs of fauna utilising the WBs (e.g. adults, chicks, eggs, fur, feathers, chewing, staining, etc) and the condition of the boxes. Some of these photos have been used within the report itself, with a selection of additional images displayed in Appendix B.

# ARTIFICIAL HOLLOW USAGE

The WBs were serviced in April-May and then monitored in October-November 2022. One hundred and eighty-three (183) WBs were serviced and/or monitored in 2022. The WBs are distributed across nineteen locations - throughout the city (Table 1; Appendix A). Twenty-three damaged or bee occupied WBs were replaced in 2023.

**Table 1: Details the number of artificial hollows installed and monitored across the City of Unley during 2022.**

Locations	Number
Black Forest PS, BLACK FOREST	9
Cromer Pde, MILLSWOOD	14
Devon St & Railway Tce, GOODWOOD	4
Ferguson Ave, MYRTLE BANK	5
Forestville Res.,GOODWOOD	16
Fullarton Park, FULLARTON	10
Goodwood Oval, GOODWOOD	15
Goodwood PS, GOODWOOD	12
Henry Codd, PARKSIDE	2
Heywood Park, UNLEY PARK	27
Hillsley Ave, EVERARD PARK	3
Jellicoe Ave, KINGS PARK	5
McLeary Park, PARKSIDE	3
Orphanage Park, Millswood	12
Ridge Park, MYRTLE BANK	22
Souter Park, GOODWOOD	4
Wilberforce Walk, Everard Park	5
Windsor St South, PARKSIDE	8
Windsor St, PARKSIDE	7

The WBs collectively included:

- 66 Brushtail possum boxes (BPB)



- 53 Medium parrot boxes (MPB)
- 43 Small parrot boxes (SPB)
- 4 Large parrot box (LPB)
- 2 Kookaburra boxes (KbB)
- 3 Pardalote boxes (PdB)
- 12 Bat boxes (BtB)
- Plus, three WBs on private property.

## Fauna recorded during survey

Utilisation of the WBs by native fauna was average in 2022. Wildlife recorded using the WBs, numerically and as a percentage, resulted in a typical number of WBs *In Use* and *Used in the Last 12* (Table 2). The results were down on 2021, which was one of the most successful years on record, possibly because the parrots nested early and we missed them or with the

unusual weather, somehow suppressed breeding. Various fauna species used 85 WBs (46%; Figure 8), on at least one of the two servicing/monitoring days. Seventy-five WBs were “In-Use” during Spring; 17 in Autumn and 10 “In-Use” during both observation periods.



Figure 8: Six Eastern Rosella chicks in a medium parrot box (#084), on Cromer Pde.

Table 2: UCC Year-on-Year Comparison 2020-22

Year	No. Wildlife Boxes “Available”	In Use <sup>1</sup>	Used in Last 12 Months <sup>2</sup>	Empty/ Unused
2020 No.	161	74	71	17
2020%		46.0%	44.1%	10.6%
2021 No.	177	96	67	14
2021%		54.2%	37.9%	7.9%
2022 No.	183	85	83	15
2022%		46.4%	45.4%	8.2%
		1: Full Year	2: Exc. In use & Empty	

Five different bird and two possum species were recorded. The maximum number of wildlife species observed using the WBs over the two periods included:

- Possums (individuals): 12 Common Brushtail (*Trichosurus vulpecula*) in autumn and eight Common Ringtail (*Pseudocheirus peregrinus*) also in autumn. This represent high brushtail usage, and typical Ringtail usage across the year.
- Birds: the WBs were inhabited by 49 pairs of Rainbow Lorikeets (*Trichoglossus haematodus*; Figure 9), seven Eastern Rosellas (*Platycercus eximius*), five Galahs

(*Eolophus roseicapilla*) and one Adelaide Rosella pair (*Platycercus elegans*). During Spring 2022 a Boobook Owl (*Ninox boobook*) nesting event, with two chicks was recorded for the first time (Cover page). Two nests of unidentified Rosellas, were also recorded. Collectively 158 chick and eggs were observed specifically associated with the WBs during the spring survey, which is a strong performance.



- Bats: dropping were recorded in one Heywood Park bat box (#025), spring 2022.

Figure 9: Two Rainbow Lorikeet eggs in a medium parrot box (#088), off Cromer Pde.

An additional, 78 (42%) WBs displayed evidence of activity (Used in the Last 12 Months) in spring and 120 (65%) in autumn, ranging from remains of eggs, chewing and scratching, disturbed bedding material, faecal matter, dead chicks, a dead

possum, insect castings, fur and feather (Figure 10). Five WBs contained bees during the spring survey period, none of which housed the new metal/plastic ceilings, as part of the deterrent trial. The autumn 2022 survey, recorded just one feral bee hive, although removals preceded usual maintenance works.



Figure 10: Brushtail box (#101) used by Galahs, in Fullarton Park.

Assessment was made on 183 WBs, available during the peak period of the year, in Spring. WBs “In Use” were slightly up compared to 2020, though below 2021 which exhibited the highest historical usage recorded. WBs “Used in the Last 12 Months” was comparable to 2020 and 2021, though slightly higher than both years. When the “In Use” and “Used in the Last 12 Months” data are combined, the number of WBs used was

slightly down on 2021, which was the most successful of recent years, though still excellent at 91.8%. The overall numbers of parrot chicks observed (102) was very high, with the number of eggs observed (56), was similar to many of the recent years.

## Wildlife Box Usage by Location

The larger parks contain between nine and 27 WBs, with occupation rates combining ‘In Use’ and “Used in last 12 Months” realising 73-100% occupation. Almost 70% of the sites, when including both small and large parks, recorded 100% usage for the past year.

Black Forest Primary School demonstrated high wildlife use in 2022. Nine WBs were available to use in spring, of which six were In Use and three had been Used in the Previous 12 Months. Rainbow Lorikeets, Galahs, Adelaide and Eastern Rosellas were all observed in the park during spring.

Cromer Pde contains 12 WBs. A Brushtail Possum was recorded, as were Rainbow Lorikeets, Adelaide Rosellas and Eastern Rosellas. All boxes had been used across the year.

Forestville contains 16 WBs, of these five (33%) were In Use and nine (56%) had been Used in the Last 12 Months, with all except one having been used over the recording period. Three pairs of Rainbow Lorikeets, a pair of Galahs and a Brushtail Possum (Figure 11) were all observed. Additionally, the first ever Boobook Owls were recorded for the programme (cover page). One of the WBs had also been occupied by feral honey bees.

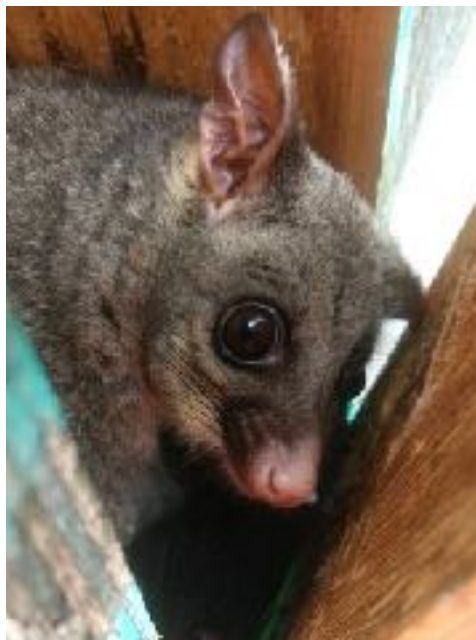


Figure 11: Brushtail Possum in a small parrot box (#063), at Forestville.

Eleven WBs are installed in Orphanage Park, of these five (45%) were In Use when surveyed, two contained unidentified rosellas, one Galahs and one a Brushtail Possum. Additionally, five WBs had been Used in the last 12 Months.

Goodwood Primary School contains 11 available WBs, of these five (45%) were 'In Use' and six (55%) had been 'Used in the Last 12 Months'. Five pair of Rainbow Lorikeets (Figure 12) were recorded. One box contained a feral bee hive.



Figure 12: Two Rainbow Lorikeet chicks in a small parrot box (#056), at Goodwood Primary School.

Fifteen WBs are distributed along Windsor St (North & South), of these seven (47%) were In Use during spring and six Used in the previous 12 Months. Demonstrating 100% usage across the year, when one WB occupied by a feral bee hive was excluded.

Ridge Park contains 22 WBs. A single Ringtail Possum (Figure 13) was observed during autumn 2022 and none during the spring survey. One Brushtail Possum was seen during both autumn and spring. Three pairs of Rainbow Lorikeets, a pair of Galahs and a pair of Eastern Rosellas



were also recorded.

Seven WBs were In Use at Heywood Park over the spring survey period. Five Brushtail Possums were recorded during spring, which is a record for any park. One dead Brushtail Possum was also recorded, and additional four WBs, had been used by unidentified possums in the past 12 months. WBs also supported two pairs of Rainbow Lorikeets. Usage by Brushtail Possums may limit occupation by parrot species or ringtails. Bat droppings were also recorded in WBs (#025; Figure 14).



The WBs in the smaller locations across the city consist of mixed avian usage, including Rainbow Lorikeets, Galahs, Rosellas and unidentified birds. *Figure 13: Brushtail box (#015) in Ridge Park, with a Ringtail Possum in residence.*

Evidence of Brushtail and Ringtail Possums was also observed. Parrot nesting or roosting activity was recorded in the majority of WBs whether they were located in schools, streets or parks during the Spring period.

Six failed breeding events were observed in Spring 2022, the majority involved parrots, including Rainbow Lorikeets, Adelaide Rosellas and Eastern Rosellas. The



*Figure 14: Bat dropping in a bat box (#025), in Heywood Park.*

remains of one possum was also observed. The failure of parrot breeding events is relatively common in studies of wild populations, both in natural and artificial hollows.<sup>13</sup> Recent local observations suggest that Galahs in particular, contribute to lorikeet and rosella nesting mortality.

### Other Fauna

Marbled Gecko were found in or behind numerous boxes across both visits. They typically live under bark or in natural hollows and take advantage of WBs, when present, particularly if the boxes are not being used (Figure 15).

Spiders were recorded throughout the survey and are common in WBs, particularly Huntsmans (Sparassidae) using bat or pardalote boxes; where bird and possum movement is limited.





service period of such boxes has been extended, where the rest of the box is sound. This has been achieved by inserting substitute floors, removing the need to replace the entire WB (e.g. Figure 17), extending the life of the box.

---

## CONCLUSIONS & RECOMMENDATIONS

---

The approach UCC is taking continues to have a positive impact on the local hollow dependant wildlife. These WBs supply much-needed habitat for a range of wildlife species. This year has again been very successful, with almost 92% of the available WBs being utilised over the previous 12 months (Table 2; Figures 18, 19 & 20). The WBs enhance local biodiversity and expose UCC residents to hollow dependant wildlife that are able to co-exist with us, across the City.

The numbers of WBs that are now installed across Unley is 186. This includes 162 WBs in council parks, reserves or verges, 21 in schools (Goodwood PS and Black Forest PS) and three on private property.

The WBs are serviced (& monitored) between February and May annually (when usage is at its lowest) and a second monitoring occurs during the September-



*Figure 18: Rainbow Lorikeet chick in a medium parrot box (#159), in Goodwood Primary School.*

November breeding peak, each year. Annual servicing will continue to maximise the safety and functionality of the WBs, minimise the impact to host trees and enable WB damage or occupation by feral bees to be identified, so these resources can be maintained. This approach is working well and producing very successful results.

It is recommended reporting continues annually.

As of writing, feral bees from all boxes identified in the spring 2022 survey, plus additional hives reported (during autumn monitoring), have been removed. Feral bees are the second greatest threat to hollow dependant fauna, after habitat clearance. As recommended the boxes with active hives, will

simply be removed and replaced, following approval, as this approach is the most

cost effective option. Again in 2023, the replacements will be furnished with either corflute or metal ceilings, as a trial to reduce uptake by real bees.

Five WBs had deteriorated, due to wildlife or time, to the point where they require replacement in 2023. These include one medium parrot (050), two brushtail boxes (015 & 113) and one small parrot box (148 & 173). In most cases this is likely due to Galah damage, while with one of the brushtail boxes it has been in service for many years and has reached the end of its useful life.

Since 2017 *fauNature* has utilised an electronic recording system. The boxes are also 'located' on Google Maps, this information can be supplied in either hard copy or electronic form, as required (see Appendix C).



*Figure 18: A Brushtail Possum in a possum box (142), at Orphanage Park.*

In 2020, Kat Ryan had discussed the possibility of expanding the WBs through the central section of the city, in conjunction with the local schools in the area. This was not progressed due the impact of COVID-19, however it now maybe worth revisiting these plans.



*Figure 19: Five Eastern Rosella Chicks in a medium parrot box (152), in Ridge Park.*

The ongoing assessment continues to be very positive, which reinforces the strategy for enhancing wildlife by Unley Council. *fauNature*® would welcome the opportunity to investigate additional locations across the city where the Installation of WBs is likely to increase the presence of native species, as this will be appreciated by wildlife and local residents alike.

*fauNature*® welcomes any questions regarding this report.

---

# REFERENCES

---

1. Wildlife Box Monitoring and Evaluation Report for Unley City Council (2010).
2. Wildlife Box Monitoring and Evaluation Report for Unley City Council (2011).
3. Wildlife Box Monitoring and Evaluation Report for Unley City Council (2012).
4. Nest Box Monitoring and Evaluation Report for Unley City Council (2013).
5. Community Wildlife Project. Phase II - Wildlife Box Install (Feb 2014).
6. Nest Box Monitoring and Evaluation Report for Unley City Council (2014).
7. Nest Box Monitoring and Evaluation Report for Unley City Council (2015).
8. Nest Box Monitoring and Evaluation Report for Unley City Council (2016).
9. Wildlife Box Monitoring and Evaluation Report for Unley City Council (2017).
10. Wildlife Box Monitoring and Evaluation Report for Unley City Council (2018).
11. Wildlife Box Monitoring and Evaluation Report for Unley City Council (2019).
12. Wildlife Box Monitoring and Evaluation Report for Unley City Council (2020).
13. Wildlife Box Monitoring and Evaluation Report for Unley City Council (2021).
14. Higgins P.J. Handbook of Australian, New Zealand and Antarctic Birds, Vol 4(1999) p207 & 333-334.



# APPENDIX A: LOCATIONS

## Unley Council - Wildlife Box Locations (2021)

Tree Location	WB #	WB Type	Tree Type	WB Height	WB Orientation	Latitude	Longitude	WB Condition
Ridge Park, MYRTLE BANK	1	BtB	Eucalypt	4	NW	-34.96038	138.63993	Fair
Ridge Park, MYRTLE BANK	2	BtB	Eucalypt	4	NW	-34.96035	138.6399	Fair
Ridge Park, MYRTLE BANK	3	MPB	Eucalypt	4	SE	-34.96032	138.63987	Good
Ridge Park, MYRTLE BANK	4	BPB	Eucalypt	5	SE	-34.960233	138.64025	Fair
Ridge Park, MYRTLE BANK	5	MPB	Eucalypt	5	SE	-34.9602	138.6402667	Fair
Ridge Park, MYRTLE BANK	6	SPB	Eucalypt	5	SE	-34.960033	138.6408833	Fair
Ridge Park, MYRTLE BANK	7	SPB	Eucalypt	5	S	-34.960017	138.64095	Fair
Ridge Park, MYRTLE BANK	8	BPB	Eucalypt	5	SE	-34.960267	138.6412833	Good
Ridge Park, MYRTLE BANK	9	MPB	Eucalypt	5	SE	-34.960333	138.64135	Good
Ridge Park, MYRTLE BANK	10	SPB	Eucalypt	5	S	-34.96065	138.64165	Good
Ridge Park, MYRTLE BANK	11	BtB	Eucalypt	4	N	-34.9613	138.640783	Good
Ridge Park, MYRTLE BANK	12	BtB	Eucalypt	4	N	-34.96133	138.64075	Good
Ridge Park, MYRTLE BANK	13	MPB	Eucalypt	4	E	-34.9615	138.640717	Good
Ridge Park, MYRTLE BANK	14	BPB	Eucalypt	5	S	-34.961856	138.640287	Good
Ridge Park, MYRTLE BANK	15	BPB	Eucalypt	6	SE	-34.961483	138.639717	Replace (damaged)
Ridge Park, MYRTLE BANK	16	BtB	Eucalypt	4	N	-34.960983	138.639117	Good
Ridge Park, MYRTLE BANK	17	BPB	Other	5	E	-34.960717	138.639709	Good
Windsor St, PARKSIDE	18	MPB	Eucalypt	5	SE	-34.950083	138.61633	Good
Heywood Park, UNLEY PARK	19	BPB	Other	5	S	-34.961683	138.599783	Good
Heywood Park, UNLEY PARK	20	SPB	Eucalypt	5	E	-34.961483	138.59965	Fair
Heywood Park, UNLEY PARK	21	MPB	Eucalypt	5	E	-34.961	138.599883	Good
Heywood Park, UNLEY PARK	22	BPB	Other	5	S	-34.961683	138.599783	Good
Heywood Park, UNLEY PARK	23	SPB	Eucalypt	5	SE	-34.960747	138.599758	Fair
Heywood Park, UNLEY PARK	24	BPB	Other	5	S	-34.961683	138.599783	Good
Heywood Park, UNLEY PARK	25	BtB	Eucalypt	4	N	-34.961217	138.602083	Good
Heywood Park, UNLEY PARK	26	BtB	Eucalypt	4	NW	-34.96155	138.602083	Good

Heywood Park, UNLEY PARK	27	BtB	Eucalypt	4	N	-34.96155	138.602083	Good
Heywood Park, UNLEY PARK	28	BPB	Eucalypt	3	SE	-34.960881	138.602167	Fair
McLeary Park, PARKSIDE	31	MPB	Eucalypt	5	SE	-34.942533	138.612983	Good
McLeary Park, PARKSIDE	32	MPB	Eucalypt	5	SE	-34.942683	138.613	Good
McLeary Park, PARKSIDE	33	BPB	Eucalypt	5	E	-34.942589	138.613775	Good
Henry Codd, PARKSIDE	34	MPB	Eucalypt	7	S	-34.946867	138.616133	Good
Henry Codd, PARKSIDE	35	SPB	Eucalypt	5	S	-34.947317	138.616233	Good
Windsor St, PARKSIDE	36	MPB	Eucalypt	5	SE	-34.94845	138.616233	Good
Windsor St, PARKSIDE	37	SPB	Eucalypt	4	SE	-34.949988	138.616233	Relocate Box
Forestville Res.,GOODWOOD	38	MPB	Eucalypt	5	E	-34.95247	138.583702	Good
Forestville Res.,GOODWOOD	39	MPB	Eucalypt	5	SE	-34.952383	138.584083	Fair
Forestville Res.,GOODWOOD	40	BPB	Eucalypt	4	SE	-34.95225	138.58415	Good
Forestville Res.,GOODWOOD	41	MPB	Eucalypt	5	SE	-34.952383	138.583817	Good
Forestville Res.,GOODWOOD	42	MPB	Eucalypt	4	SE	-34.951414	138.583405	Fair
Forestville Res.,GOODWOOD	43	SPB	Eucalypt	5	SE	-34.952383	138.58355	Fair
Forestville Res.,GOODWOOD	44	MPB	Eucalypt	4	SE	-34.9519	138.5836	Good
Forestville Res.,GOODWOOD	45	BPB	Eucalypt	5	SE	-34.951917	138.58395	Good
Jellicoe Ave, KINGS PARK	46	MPB	Eucalypt	5	SE	-34.964789	138.596032	Good
Jellicoe Ave, KINGS PARK	47	MPB	Eucalypt	5	E	-34.96445	138.595676	Good
Jellicoe Ave, KINGS PARK	48	BPB	Eucalypt	6	SE	-34.964181	138.595332	Good
Hillsley Ave, EVERARD PARK	49	MPB	Eucalypt	5	SE	-34.952384	138.575094	Good
Hillsley Ave, EVERARD PARK	50	MPB	Eucalypt	5	SE	-34.952772	138.575129	Replace (damaged)
Souter Park, GOODWOOD	51	SPB	Other	4	SE	-34.949641	138.593647	Good
Souter Park, GOODWOOD	52	MPB	Other	5	SE	-34.949669	138.593314	Good
Goodwood PS, GOODWOOD	53	MPB	Eucalypt	5	E	-34.952192	138.587252	Replace (bees)
Goodwood PS, GOODWOOD	54	MPB	Eucalypt	4	SE	-34.951667	138.589517	Fair
Goodwood PS, GOODWOOD	55	MPB	Eucalypt	5	S	-34.951	138.588467	Fair
Goodwood PS, GOODWOOD	56	SPB	Eucalypt	6	E	-34.951617	138.58845	Fair
Orphanage Park, Millswood	57	SPB	Eucalypt	5	SE	-34.956413	138.591746	Good
Forestville Res.,GOODWOOD	58	MPB	Eucalypt	5	SE	-34.951983	138.583817	Fair
Forestville Res.,GOODWOOD	59	SPB	Eucalypt	5	S	-34.951517	138.5836	Fair
Forestville Res.,GOODWOOD	60	SPB	Eucalypt	4	E	-34.952083	138.584167	Fair
Forestville Res.,GOODWOOD	61	MPB	Eucalypt	4	SE	-34.950867	138.58455	Fair
Forestville Res.,GOODWOOD	62	BPB	Eucalypt	5	SE	-34.9511	138.58445	Replace (bees)

Forestville Res., GOODWOOD	63	SPB	Eucalypt	4	S	-34.951183	138.584567	Fair
Forestville Res., GOODWOOD	64	BPB	Eucalypt	6	E	-34.951767	138.58415	Fair
Black Forest PS, BLACK FOREST	65	SPB	Eucalypt	3.5	SE	-34.960438	138.574282	Good
Forestville Res., GOODWOOD	66	BtB	Eucalypt	5	NW	-34.952233	138.5838	Fair
Black Forest PS, BLACK FOREST	67	MPB	Eucalypt	6	E	-34.960772	138.572696	Fair
Black Forest PS, BLACK FOREST	68	MPB	Eucalypt	4	SE	-34.960687	138.574882	Good
Black Forest PS, BLACK FOREST	69	SPB	Eucalypt	6	SE	-34.960679	138.572939	Good
Black Forest PS, BLACK FOREST	70	SPB	Eucalypt	3	SE	-34.959336	138.575623	Good
Black Forest PS, BLACK FOREST	71	MPB	Eucalypt	5	S	-34.960131	138.576426	Good
Black Forest PS, BLACK FOREST	72	MPB	Eucalypt	5	SE	-34.960448	138.5761	Fair
Devon St & Railway Tce, GOODWOOD	73	BPB	Eucalypt	4	S	-34.952734	138.585833	Fair
Crommer Pde, MILLSWOOD	75	BPB	Eucalypt	4	SE	-34.959417	138.582833	Good
Devon St & Railway Tce, GOODWOOD	76	BPB	Eucalypt	6	E	-34.951801	138.58569	Fair
Devon St & Railway Tce, GOODWOOD	77	BPB	Eucalypt	4	E	-34.951621	138.585935	Good
Devon St & Railway Tce, GOODWOOD	78	MPB	Eucalypt	5	E	-34.952764	138.585868	Fair
Crommer Pde, MILLSWOOD	79	SPB	Eucalypt	6	SE	-34.955083	138.586483	Fair
Crommer Pde, MILLSWOOD	80	MPB	Eucalypt	4	SE	-34.956	138.58645	Good
Crommer Pde, MILLSWOOD	81	SPB	Eucalypt	3	S	-34.956167	138.586383	Good
Crommer Pde, MILLSWOOD	82	MPB	Eucalypt	3	SE	-34.95645	138.58625	Good
Crommer Pde, MILLSWOOD	83	SPB	Eucalypt	5	S	-34.956817	138.586	Good
Crommer Pde, MILLSWOOD	84	MPB	Eucalypt	4	SE	-34.957033	138.585783	Good
Crommer Pde, MILLSWOOD	85	SPB	Eucalypt	3	SE	-34.957133	138.58565	Good
Crommer Pde, MILLSWOOD	86	MPB	Eucalypt	3	E	-34.95745	138.585317	Good
Crommer Pde, MILLSWOOD	87	SPB	Eucalypt	4	SE	-34.957583	138.58515	Good
Crommer Pde, MILLSWOOD	88	MPB	Eucalypt	3	E	-34.958659	138.58377	Good
Crommer Pde, MILLSWOOD	89	SPB	Eucalypt	4	SE	-34.95885	138.58355	Good
Crommer Pde, MILLSWOOD	90	BPB	Eucalypt	5	E	-34.9589	138.583383	Good
Crommer Pde, MILLSWOOD	91	SPB	Eucalypt	4	SE	-34.959483	138.582883	Good
Goodwood Oval, GOODWOOD	92	MPB	Eucalypt	5	E	-34.956849	138.583217	Good
Goodwood Oval, GOODWOOD	93	SPB	Eucalypt	5	E	-34.956707	138.582733	Good
Goodwood Oval, GOODWOOD	94	BPB	Eucalypt	5	E	-34.956408	138.582721	Good
Fullarton Park, FULLARTON	95	BPB	Other	5	E	-34.957924	138.625207	Good
Fullarton Park, FULLARTON	95	BPB	Other	5	E	-34.957924	138.625207	Good
Fullarton Park, FULLARTON	96	BPB	Other	4	E	-34.958045	138.624557	Good
Fullarton Park, FULLARTON	97	BPB	Pine	4	E	-34.957913	138.624832	Good

Fullarton Park, FULLARTON	98	BPB	Eucalypt	4	E	-34.958382	138.624637	Good
Fullarton Park, FULLARTON	100	BPB	Eucalypt	6	SE	-34.957433	138.62471	Good
Fullarton Park, FULLARTON	101	BPB	Eucalypt	3	S	-34.95801	138.625794	Fair
Fullarton Park, FULLARTON	102	BPB	Other	3	SW	-34.958225	138.625256	
Fullarton Park, FULLARTON	103	BPB	Eucalypt	5	E	-34.957684	138.624897	Good
Fullarton Park, FULLARTON	104	BPB	Other	4	N	-34.95761	138.625036	Good
Heywood Park, UNLEY PARK	105	BPB	Other	3	E	-34.96089	138.601276	Good
Heywood Park, UNLEY PARK	106	BPB	Eucalypt		SE	-34.96055	138.601579	Good
Heywood Park, UNLEY PARK	107	LPB	Eucalypt	8	SE	-34.960606	138.601619	Good
Heywood Park, UNLEY PARK	108	MPB	Eucalypt	4	SE	-34.96155	138.602083	Fair
Heywood Park, UNLEY PARK	109	KbB	Eucalypt	6	NE	-34.96055	138.601883	Good
Heywood Park, UNLEY PARK	110	PdB	Eucalypt	6	SE	-34.96055	138.601883	Good
Heywood Park, UNLEY PARK	111	BPB	Eucalypt	5	S	-34.961683	138.599783	Good
Heywood Park, UNLEY PARK	112	BtB	Eucalypt	5	W	-34.960617	138.602	Good
Heywood Park, UNLEY PARK	113	BPB	Eucalypt	6	E	-34.960617	138.602	Fair
Heywood Park, UNLEY PARK	114	BPB	Eucalypt	5	E	-34.960633	138.601967	Good
Heywood Park, UNLEY PARK	115	BPB	Eucalypt	5	S	-34.960917	138.602067	Good
Heywood Park, UNLEY PARK	116	BPB	Eucalypt	4	SE	-34.961	138.60205	Good
Heywood Park, UNLEY PARK	117	BPB	Eucalypt	4	E	-34.961183	138.602017	Fair
Heywood Park, UNLEY PARK	118	PdB	Eucalypt	3	SE	-34.961183	138.602017	Good
Heywood Park, UNLEY PARK	119	LPB	Eucalypt	5	E	-34.96165	138.602133	Good
Heywood Park, UNLEY PARK	120	PdB	Eucalypt	5	SE	-34.961733	138.602133	Good
Heywood Park, UNLEY PARK	121	KbB	Eucalypt	6	E	-34.961683	138.599783	Good
Ridge Park, MYRTLE BANK	122	BPB	Eucalypt	5	SE	-34.960748	138.6395536	Good
Ridge Park, MYRTLE BANK	123	BPB	Eucalypt	6	E	-34.962246	138.6401214	Good
Ridge Park, MYRTLE BANK	124	BPB	Eucalypt	5	SE	-34.961787	138.6392501	Good
Windsor St, PARKSIDE	125	SPB	Eucalypt	5	SE	-34.947943	138.616176	Good
Windsor St, PARKSIDE	126	MPB	Eucalypt	4	SE	-34.949048	138.616298	Good
Windsor St, PARKSIDE	127	BPB	Eucalypt	4	SE	-34.950264	138.616298	Good
Windsor St, PARKSIDE	128	BPB	Eucalypt	5	E	-34.951257	138.616421	Good
Jellicoe Ave, KINGS PARK	129	BPB	Eucalypt	6	E	-34.963919	138.595159	Good
Jellicoe Ave, KINGS PARK	130	MPB	Eucalypt	5	E	-34.964068	138.595206	Fair
Hillsley Ave, EVERARD PARK	131	SPB	Eucalypt	5	SE	-34.952593	138.574855	Good
Souter Park, GOODWOOD	132	BPB	Eucalypt	4	E	-34.950378	138.593008	Replace (bees)
Souter Park, GOODWOOD	133	MPB	Other	4	SE	-34.950354	138.593432	Good



Ferguson Ave, MYRTLE BANK	134	SPB	Eucalypt	6	SE	-34.960065	138.633762	Fair
Ferguson Ave, MYRTLE BANK	135	BPB	Eucalypt	8	E	-34.959854	138.633859	Good
Ferguson Ave, MYRTLE BANK	136	BPB	Eucalypt	5	SE	-34.959682	138.633314	Fair
Ferguson Ave, MYRTLE BANK	137	BPB	Eucalypt	5	SE	-34.959573	138.632668	Fair
Ferguson Ave, MYRTLE BANK	138	SPB	Eucalypt	7	SE	-34.959379	138.632637	Fair
Orphanage Park, Millswood	139	BPB	Pine	5	SE	-34.957154	138.592204	Good
Orphanage Park, Millswood	140	MPB	Pine	5	SE	-34.956994	138.592814	Good
Orphanage Park, Millswood	141	BPB	Eucalypt	5	E	-34.957186	138.593095	Replace (bees)
Orphanage Park, Millswood	142	BPB	Eucalypt	5	SE	-34.956602	138.592315	Good
Orphanage Park, Millswood	143	MPB	Other	4	SE	-34.956506	138.59221	Relocate Box
Orphanage Park, Millswood	144	BPB	Pine	5	SE	-34.956066	138.592092	Good
Orphanage Park, Millswood	145	SPB	Eucalypt	5	E	-34.95684	138.592217	Good
Orphanage Park, Millswood	146	SPB	Pine	4	SE	-34.95582	138.591891	Good
Orphanage Park, Millswood	147	MPB	Eucalypt	7	E	-34.956167	138.592096	Fair
Black Forest PS, BLACK FOREST	148	SPB	Eucalypt	4	E	-34.96041	138.576352	Fair
Black Forest PS, BLACK FOREST	149	MPB	Eucalypt	5	SE	-34.95932	138.575998	Fair
Windsor St South, PARKSIDE	150	BPB	Eucalypt	5	SE	-34.954594	138.616681	Replace (bees)
Windsor St South, PARKSIDE	151	MPB	Eucalypt	5	E	-34.954887	138.61671	Good
Windsor St South, PARKSIDE	152	MPB	Eucalypt	5	SE	-34.955412	138.616753	Good
Windsor St South, PARKSIDE	153	BPB	Eucalypt	5	SE	-34.955638	138.616854	Good
Windsor St South, PARKSIDE	154	MPB	Eucalypt	6	SE	-34.955699	138.616917	Good
Windsor St South, PARKSIDE	155	BPB	Eucalypt	7	SE	-34.955643	138.617434	Fair
Windsor St South, PARKSIDE	156	SPB	Eucalypt	5	SE	-34.955928	138.616861	Good
Windsor St South, PARKSIDE	157	SPB	Eucalypt	6	S	-34.95615	138.616839	Good
Goodwood PS, GOODWOOD	158	SPB	Other	5	SE	-34.951429	138.5890692	Good
Goodwood PS, GOODWOOD	159	MPB	Other	6	SE	-34.951822	138.5895252	Good
Goodwood PS, GOODWOOD	160	MPB	Eucalypt	4	SE	-34.951829	138.5892838	Good
Goodwood PS, GOODWOOD	161	MPB	Other	4	SE	-34.951847	138.5890585	Good
Goodwood PS, GOODWOOD	162	SPB	Other	4	S	-34.952031	138.5886884	Good
Goodwood PS, GOODWOOD	163	BPB	Eucalypt	5	SE	-34.952038	138.5884604	Good
Goodwood PS, GOODWOOD	164	BPB	Eucalypt	6	SE	-34.951605	138.5884604	Good
Goodwood PS, GOODWOOD	165	SPB	Other	5	SE	-34.952196	138.587468	Good
Orphanage Park, Millswood	166	BPB	Eucalypt	4	SE	-34.957288	138.5917193	Good
Orphanage Park, Millswood	167	BPB	Eucalypt	5	SE	-34.95731	138.5915885	Good
Ridge Park, MYRTLE BANK	168	SPB	Eucalypt	4	SE	-34.9613	138.6415567	Good

Ridge Park, MYRTLE BANK	169	SPB	Eucalypt	6	SE	-34.962118	138.6400546	Good
Goodwood Oval, GOODWOOD	170	BtB	Eucalypt	4	N	-34.956433	138.5840993	Good
Goodwood Oval, GOODWOOD	171	BtB	Eucalypt	4	NW	-34.956389	138.5837153	Good
Goodwood Oval, GOODWOOD	172	BPB	Eucalypt	5	SE	-34.956298	138.5841999	Good
Goodwood Oval, GOODWOOD	173	SPB	Eucalypt	5	SE	-34.955792	138.5843968	Replace (damaged)
Goodwood Oval, GOODWOOD	174	MPB	Eucalypt	6	E	-34.95635	138.584237	Fair
Goodwood Oval, GOODWOOD	175	SPB	Eucalypt	5	SE	-34.955983	138.5840285	Good
Goodwood Oval, GOODWOOD	176	LPB	Eucalypt	7	SE	-34.956505	138.5841977	Fair
Goodwood Oval, GOODWOOD	177	MPB	Eucalypt	6	SE	-34.955825	138.5836719	Fair
Goodwood Oval, GOODWOOD	178	BPB	Eucalypt	7	SE	-34.955278	138.5834353	Fair
Goodwood Oval, GOODWOOD	179	BPB	Eucalypt	4	SE	-34.95509	138.5830146	Good
Goodwood Oval, GOODWOOD	180	LPB	Eucalypt	6	E	-34.956696	138.5831932	Good
Goodwood Oval, GOODWOOD	181	BPB	Eucalypt	4	E	-34.955852	138.5829813	Good
Wilberforce Walk, Everard Park	182	MPB	Eucalypt	5	E	-34.950549	138.5810459	Fair
Wilberforce Walk, Everard Park	183	SPB	Eucalypt	5	E	-34.950567	138.5807276	Good
Wilberforce Walk, Everard Park	184	BPB	Other	4	E	-34.950582	138.5804795	Good
Wilberforce Walk, Everard Park	185	SPB	Other	5	E	-34.950592	138.5803192	Good
Wilberforce Walk, Everard Park	186	BPB	Other	5	E	-34.950598	138.5802012	Good

## APPENDIX B: PHOTO SUMMARY

Unley Council - Selected wildlife box observational records (2021).



No. 009: Three Galah eggs - medium parrot box, Ridge Park.



No. 018: Rainbow Lorikeet egg - medium parrot box, Windsor St.



No. 021: Rainbow Lorikeet chicks - medium parrot box, Heywood Park.



No. 023: Brushtail Possum - small parrot box, Heywood Park.



No. 035: Rainbow Lorikeet eggs - small parrot box, Henry Codd Park.



No. 071: Adelaide Rosella eggs - medium parrot box, Black Forest Primary School.





No. 105: Deceased Brushtail Possum - possum box, Heywood Park.



No. 075: Brushtail Possum - possum box, off Cromer Pde.



No. 170: Ants nest in a bat box, Goodwood Oval.



No. 182: Rainbow Lorikeet egg & chick - medium parrot box, Wilberforce Walk.



No. 159: Rainbow Lorikeet chick - medium parrot box, Goodwood Oval.



No. 149: Galah eggs - medium parrot box, Black Forest Primary School.



