

# DISCOVER HISTORIC UNLEY

---

## **A walk past buildings built between the 1850s and the 1960s.**

Begin at the corner of Oxford Terrace  
and Unley Road and end in the Soldiers  
Memorial Garden off Unley Road.



# DISCOVER HISTORIC UNLEY

## SOUTH AUSTRALIA'S THIRD CITY

Immediately to the south of the Park Lands is the City of Unley. Located on fertile land, the area was traversed by the Kaurna people for thousands of years. Colonists arrived to SA in 1836. Land in the capital site, Adelaide, was available for selection and auction after March 1837 and surrounding districts were progressively opened for settlement.

Unley separated from Mitcham and formed a Town in 1871 with the villages of Unley, Parkside, Goodwood and Fullarton. Unley Road gradually grew into a corridor of commercial, social and cultural life. By 1906 there were over 20 000 people spread across 15 villages and Unley became South Australia's third city after Adelaide and Port Adelaide.

A significant part of the land in the village of Unley was owned by Edmund Isaac Stephen Trimmer. He was responsible for gifting the land for municipal, recreational and religious purposes in the heart of Unley and was a strong advocate for SA in Britain.

Discover Historic Unley is centred on the core of the City of Unley and encompasses a variety of buildings dating from the 19th and 20th centuries. Further information can be obtained from the Unley Museum in Edmund Avenue.

**With the map in the back of this brochure, enjoy exploring the historic past of the City of Unley!**

---

**THERE WILL BE SPECIAL  
QUESTIONS TO ANSWER  
THROUGHOUT THIS WALK.**



---

**COVER IMAGE** 27th Regiment commanded by Lieutenant Colonel Dollman, former Mayor of Unley, marching along Unley Road, 8 May 1915. Unley Museum Collection P 002098.

01

*Containing books,  
a gavel, and money*



## ORIGINAL UNLEY TOWN HALL

1880, 1886, 1907 & 2004 | 181 UNLEY ROAD

The closest building to the corner housed Unley's first purpose-built Council Chambers, a Town Hall and Institute. South Australia was the first Australian colony to institute local government. Modifications to this building occurred six years after initial construction. In 1907 it was expanded to reach the corner and included a banking chamber occupied by the Bank of Adelaide.

It held public gatherings including land sales, concerts, and a Magistrates Court for civil and criminal cases. The Institute had a library and reading room. English & Soward were the architects of the original building and John Wark was its builder.

There was a garden in between the building at the corner and the New Town Hall. This was enclosed to create the space of the library. The Unley Library moved into the refurbished original Council chambers in 1978 and further renovations were completed in 2004.



CAN YOU FIND THE ORIGINAL 1880 FOUNDATION STONE ON THIS BUILDING? HOW DOES IT RELATE TO THE 1907 ADDITION?

# 02

*In memory of a long  
serving Town Clerk*



The fountain in its original location along Oxford Terrace, c1907.  
Unley Museum Collection P 96 130.

## CAST IRON FOUNTAIN

1907 | 181 UNLEY ROAD

This fountain was erected as a memorial to John Miller by his son John Barrowcliff Miller. Cast in iron, it was built over a fresh spring known to the Kaurna. The original site for the fountain was near the corner of Oxford Terrace. It was moved a few times after being hit by cars before coming to its present location.

Miller Snr was the Town Clerk of Unley from 1879 until 1903. He oversaw the improvement of roads, drainage and lighting across the town. His son was the Clerk from 1903 to 1937. Unley had direction from the Miller family for over half a century!



WHAT IS THE DIFFERENCE BETWEEN  
CAST AND WROUGHT IRON?

03

## *Unley's first Anglican Church*



St. Augustine's original church, unknown date.  
Unley Museum Collection P 97 003.

## **ST AUGUSTINE'S ORIGINAL CHURCH**

**1869 | 183 UNLEY ROAD**

The first Anglican Church in Unley (the smaller building to the north) was built between 1869 and 1890 in the neo-Gothic style. When opened in 1870 it lacked a roof and glass in its windows. Two accomplished colonial architects were involved: RG Thomas designed the church under the guidance of Thomas English who also supervised its construction.

# 03

## Unley's First Anglican Parish



St Augustine's original Church on the left with the new Church on the right, 1970. Unley Museum Collection P 000510.

## ST AUGUSTINE'S CHURCH

1922 | 183 UNLEY ROAD

The new and larger Gothic Revival style church was built in 1922 and consecrated in 1933 when free of debt. Bruce and Harral were the architects and Emmett and Sons were contracted to build it. The bell tower is a memorial for those who died in World War I. The church features a fine collection of stained glass windows by William Morris & Company of London and its successor Dearle. The pipe organ, made in 1876, came here from St Peter's Cathedral, North Adelaide after modifications in 1931.



CAN YOU GUESS WHO THE TOWER COMMEMORATES?  
NOTICE THAT IT FACES THE GARDEN ACROSS THE STREET.

# 03

## A 19th Century School



School photo from St Augustine's, c1916.  
Unley Museum Collection P 03 148.

## ST AUGUSTINE'S SCHOOL

1888 | 183 UNLEY ROAD

The original school was a wooden building later replaced by the current stone structure, once funds were raised. The Kilburn Sisters opened the St Augustine's Parish Church Day School here in 1888. The Kilburn Sisters oversaw the school until 1912 when the parish assumed responsibility.

During most of its existence, the school was known as St. Augustine's Parish Church Day School. From the middle of the 1950s it was St Augustine's Grammar School. From early 1964 it was a kindergarten or preschool and beginning in 1984, the Lindisfarne School. An antique shop opened here in 1999.



# 04

*"Lest we forget"*



Mayor Herbert Richards and Governor Sir Archibald Weigall opened the Garden at the Rotunda on Anzac Day, 1921. Unley Museum Collection P 002105.

## SOLDIERS MEMORIAL GARDEN

1921 | 226 UNLEY ROAD

In 1917 land was secured for the Unley Soldiers' Memorial Garden of Honour, to remember Unley residents who served in World War I. In 1919 a citizens' committee was formed to raise funds and develop the Garden. The Ladies' Branch Committee raised funds to erect the bandstand, two drinking fountains and the Arch of Remembrance inscribed with the 361 Unley residents who died. In 1921 Governor Sir Archibald Weigall opened this tranquil garden designed for rest, meditation and remembrance.

The Cenotaph was dedicated in 1955 to the memory of those who died during World War II. It also recognises conflicts in Malaya, Borneo, Korea and Vietnam. There are two German field guns captured by Unley's 27th Battalion, AIF and a 3 inch mortar donated by the 27th Battalion. The World War I South Park Bowling Club Memorial was restored and relocated by the RSL Unley Sub Branch.



IN WHOSE MEMORY WAS  
THIS GARDEN BUILT?



05

70 years  
of banking

## NATIONAL BANK

1926 | 232 UNLEY ROAD

The National Bank purchased the property at 232 Unley Road to build a bank and residence. The National Bank operated in this building until the late 1990s. Its earlier branch opened in 1922 on Unley Road near the corner of Hart Avenue. The original house on this property was a six-room stone and brick dwelling built in 1905 by Thomas Francis, a local builder.

GA Rule & Sons tendered and built the bank for about £3 200. The National Bank had James Francis Dowling as the manager earning £360 per annum. Like many bank managers, he lived on the premises with his family and most likely had a pistol. Bank pistols were to be kept clean, loaded, accessible to the officer in charge, and fired at least monthly.

### LOOK OUT FOR | PARK & WATTLE STS

**Park St:** In the 1940s, on the north side of Park Street, there was a service station while on the south side was an undertaker.

**Wattle St:** A species of wattle is the national floral emblem. There are close to 1 000 species and on any given day, somewhere in the nation there is one in flower.



WHY WOULD A BANK MANAGER  
LIKE DOWLING HAVE A PISTOL?

# 06

Where an elephant, birds  
and fish were on view



Illustration of the original Cremorne Hotel where Mrs. I Crocker, proprietress, also sold hay and chaff, c1879. Unley Museum Collection P 98 021.

## CREMORNE HOTEL

1925 | 209 UNLEY ROAD

The Cremorne Hotel was a popular southern stop for those travelling to and from Adelaide. It was a venue for public meetings, notices and elections. As it had a weighbridge, teamsters would stop with their loads of timber and stone. Opened in 1854, the original building was located behind the current 1925 structure.

The hotel had a sizeable garden. The first publican, Thomas Bentley, filled the garden with many native animals. This small zoo housed fish, birds and even an elephant. Neighbours adjacent to the Cremorne woke up to the sound of an elephant's call.

In *The South Australian Free Press* the Cremorne was predicted to be "a favourite resort for the idle from town, as well as for all who seek rational and cheerful amusement."



WHEN THE CREMORNE HAD ITS ZOO IN THE 1850S WHAT  
NATIVE OR EXOTIC ANIMALS WERE ON DISPLAY?

# 07

## Once the Town Pound



## UNLEY INSTITUTE

1907 | 201 UNLEY ROAD

This location used to be the town's pound for stray horses and cattle. Unley Council sold this property when it took over the Institute's earlier rooms in the upper floor of the Original Town Hall. The Institute relocated into this purpose-built building. Subscriptions helped to fund its library.

It had its first meeting in 1883 when there were just over 200 volumes in its collection. Since 1996 it has housed the SA Genealogy & Heraldry Society.

### LOOK OUT FOR | UNLEY RD, NORTH OF FAIRFORD ST

#### Two Mile Marker

#### Distance from Adelaide's GPO

A white post marks two miles from the General Post Office in Adelaide. It has been hit by cars, so what you see is a replica piece of wood with the original "2" and metal cap. There is another mile post on Anzac Highway, adjacent to the Keswick Army Barracks indicating 28 miles to Willunga and two miles to the Adelaide GPO.

08

*Where faithful  
groups worship*



Uniting Church with its former sign for St Andrew's Manthorpe Uniting Church, 1984. Unley Museum Collection P 001540.

## UNLEY UNITING CHURCH

1898, 1903 | 187 UNLEY ROAD

In 1898 the Congregational Church relocated here from its still standing Rugby Street premises. A hall was added in 1903. The Reverend Charles Manthorpe tragically died after conducting only his second morning service; the church was named after him.

The Uniting Church in Australia was formed in 1977 when the Methodists, Presbyterians and Congregationalists merged. In 1981 the St Andrew's Presbyterian Church (in Hughes Street) was sold and that congregation joined the one here. Now known as the Unley Uniting Church, it forms a parish with the Malvern Uniting Church.

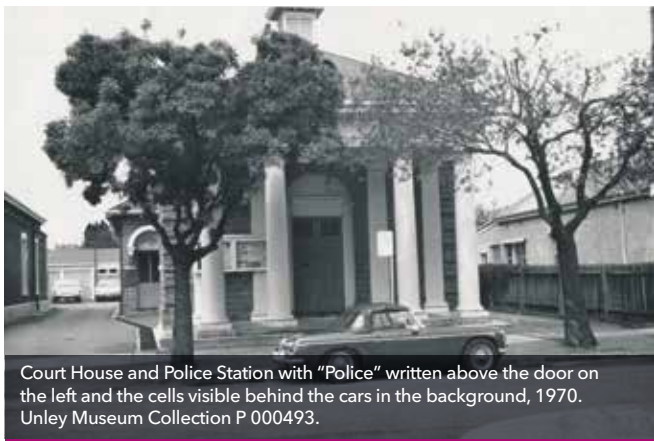
The church is (or has been) home to Hungarian, Romanian, Persian and Korean Christian groups as well as the Kindergym organisation.



FIND THE UNITING CHURCH SYMBOL ON THE BUILDING.  
WHAT DOES THE DOVE SIGNIFY?

# 09

## *Upholding the law*



Court House and Police Station with "Police" written above the door on the left and the cells visible behind the cars in the background, 1970. Unley Museum Collection P 000493.

## **COURT HOUSE AND POLICE STATION**

**1925 | 81 & 83 EDMUND AVENUE**

The police station was Unley's third, replacing one to the north on Unley Road adjacent to the early post office. The earliest one known was on the north side of Mary Street for a decade from 1882. Early trials were held in the police stations.

After Council's repeated requests for adequate police facilities, the state government finally purchased this property for a police station and court house. In the 20th century, most appearances in this court were for drunk and disorderly behaviour.

In 1969 this station became the headquarters for the Southern Metropolitan Police District and part of the Magistrates Court personnel moved into the former fire station across the street.



**HOW MANY PRISON CELLS ARE AT  
THE BACK OF THE CAR PARK?**

# 10

70 years of  
fighting fires



View of Unley's Metropolitan Fire Brigade water cart including four firemen and Bluey & Turps, c1900. Unley Museum Collection P 96 150.

## FIRE STATION AND MUSEUM

1898, 1905 | 80 EDMUND AVENUE

As more and more people built houses in Unley, the danger of fire claiming lives and damaging property was very real. In 1898 this was the first fire station built south of the city. It was a station enlarged in 1905 that housed firemen, horses and water carts. Later motorised fire engines were housed here until 1968.

In 1912 the firemen went on strike, but continued to fight fires and feed the horses out of uniform. Bluey and Turps, the horses that pulled the water cart, retired in 1917 and were replaced by a fire engine.

Between being a fire station and Unley Museum from 1989, the building was used by the courts and as a caretaker's residence.

To learn more about local history, come inside.



WHY DID THE FIREMEN HAVE BLUEY & TURPS,  
THE TWO HORSES?

# 11

*Where sport  
takes flight*

## UNLEY OVAL

1892 | TRIMMER TERRACE

Edmund Trimmer gifted part of his property for "sport and public recreation" in 1881. Trimmer Terrace running along the western side of the oval was so named in 1950 in his honour. This was the New Parkside Oval until 1892 when it was officially opened and renamed Unley Oval. Thousands gathered for a ceremony, including 3 500 children.

Cricket was played here in the 19th century with bowls, tennis and football added in the 20th century. The AC Thomas Stand was built in 1901 and replaced by the Jack Oatey Stand in 1976. Oatey was an Australian Rules Football player and coach. The McKay Stand was built in 1924. Arthur Churchill Thomas and Harry J McKay were both members of the Sturt Cricket Club.

At the oval in 1903 South Australia beat England in a well-attended cricket match. Captain Harry Butler demonstrated aerial acrobatics in his monoplane, during a special 1919 function here, to raise repatriation funds for soldiers returned from World War I.

The Unley Oval straddles what would have been the intersection of Oxford and Cambridge Terraces. Interestingly, the colours for Oxford and Cambridge Universities are similar to the double blue colours of the Sturt Football Club.



---

WHAT SHAPE IS THIS PLACE FOR SPORT AND RECREATION? HOW WOULD YOU CALCULATE ITS AREA?



# 12

*In case of an  
enemy attack*



Air raid shelter before being incorporated into the municipal offices, 1977.  
Unley Museum Collection P 89 117.

## WORLD WAR II AIR RAID SHELTER

1942 | OXFORD TERRACE

During WWII, there was a fear that Japan could bomb major cities in Australia. In order to protect emergency personnel, the government built a network of semi-underground, concrete structures. Seven shelters like this were built around Adelaide.

This one protected Unley's communication officials, wardens and Red Cross volunteers.

Most of this concrete structure is underground. Its roof was thick and hung over the walls so that if it was hit, it would not fall in and crush those inside. There were two staircases so people always had a way to exit in an emergency.



WHAT PART OF THE BUILDING IS  
BEHIND THE ANGLED STRIPES?

## 12

*An expanded  
municipal building*

Unley Town Halls by Burnell Studios, Unley c1950. Notice the fountain at the corner about where the sign is located. Unley Museum Collection P 002346.

## NEW TOWN HALL

1907 | OXFORD TERRACE

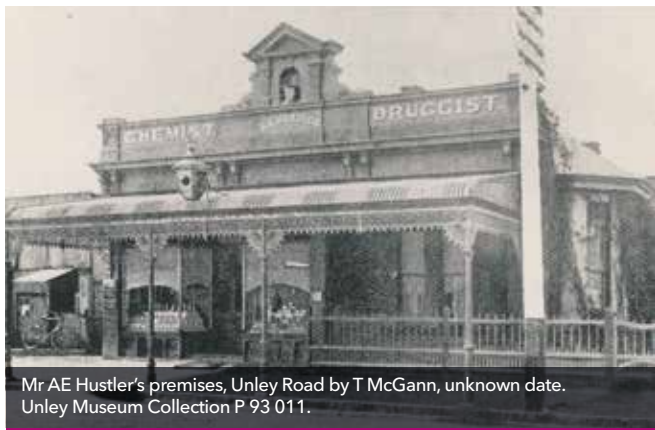
An earthquake in 1897 seriously damaged the Original Town Hall on the corner. After two unsuccessful polls, ratepayers finally agreed to fund the construction of a new hall. The Mayoress laid the foundation stone on 9 March 1907. The new building had a rooftop garden, open during concert intervals, which has since been covered over.

Walter Torode was Unley's New Town Hall building contractor. Torode was a master builder, supervising architect, and stone quarry owner, who designed buildings that were unconventional in form and structurally innovative. The Town Hall opened on 14 August 1907 with over 1 400 people attending. Local resident Nelson Wood painted the original stage scenery. The building was used for pantomimes, concerts, literary competitions, mayoral balls and films. It operated as a cinema for over thirty years beginning in 1918 and again for just over a decade in the 1990s as the Oxford Cinema.

After another renovation in 2003, part of the Town Hall was provided for the library. It remains an important gathering place for events such as weddings, exams, preschool library programs and author talks.

# 13

## *Unley's first chemist shop*



Mr AE Hustler's premises, Unley Road by T McGann, unknown date.  
Unley Museum Collection P 93 011.

## CHEMIST SHOP

1899 | 167 UNLEY ROAD

This building used to have a mortar and pestle at its centre, under the pediment at the top of the building. Chemists ground ingredients and made most of the medicines they sold, such as cures for corns and warts.

Albert Edward Hustler established this shop in 1899. He also maintained the local birth and death register and dog registrations. Dr Herbert Algar Sweetapple had a consulting room in the building at the back. He was an Unley physician who lived in Parkside and died in December 1921.



HOW AND WHY WOULD A CHEMIST USE A MORTAR AND PESTLE? WHAT DO PEOPLE DO IN TODAY'S CHEMIST SHOPS?

# 14

*Over a century  
of banking*



Façade of Bank SA building, 1970.  
Unley Museum Collection P 000218.

## **BANK SA**

**1913 | 165 UNLEY ROAD**

The Savings Bank of SA built this two-storey building on the site of a former galvanised iron blacksmith shop. Several renovations have been done including one in 1970. Between the 1880s and 1912, bank transactions were conducted at the Unley Post Office further north on Unley Road.

G Hudd built the bank for £3 000 under the supervision of the architects Williams and Good. L Dunstone was the first manager and like many bank managers, he lived on the premises with his family. After serving in World War I, Dunstone returned as manager of the bank.



**WHY WOULD A BANK MANAGER  
LIKE DUNSTONE LIVE AT THE BANK?**

# 15

*65+ years of  
banking and counting*



Former ANZ Bank branch on north eastern corner of Marion Street and Unley Road, 1975. Unley Museum Collection P 000210.

## **ANZ**

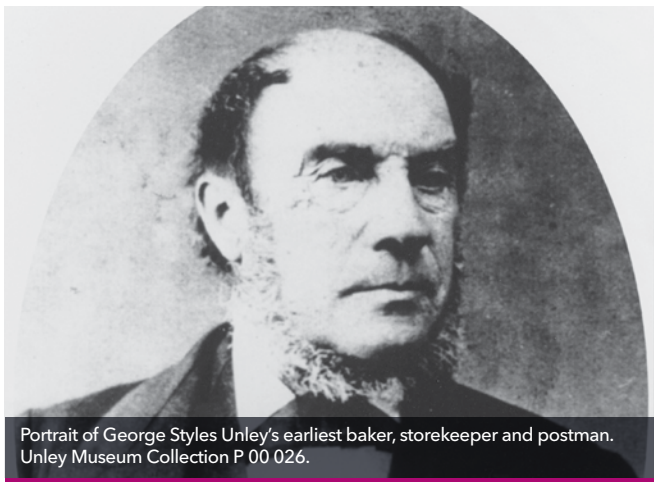
### **1965 | 123 UNLEY ROAD**

In 1947 this bank opened its doors as the Union Bank just to the south on the corner of Frederick Street. The Union and Australasia Banks merged in 1951 and the branch became ANZ.

On 19 July 1965 the English, Scottish & Australian Bank (ES & A) opened in the present location. In October 1970 ES & A merged with ANZ and consolidated their two Unley Road branches in the present building. Mr FR Symons was the first manager in this building of the merged branches.

# 16

## *Unley's earliest post office*



Portrait of George Styles Unley's earliest baker, storekeeper and postman.  
Unley Museum Collection P 00 026.

## **BAKEHOUSE**

**1865 | 190 UNLEY ROAD**

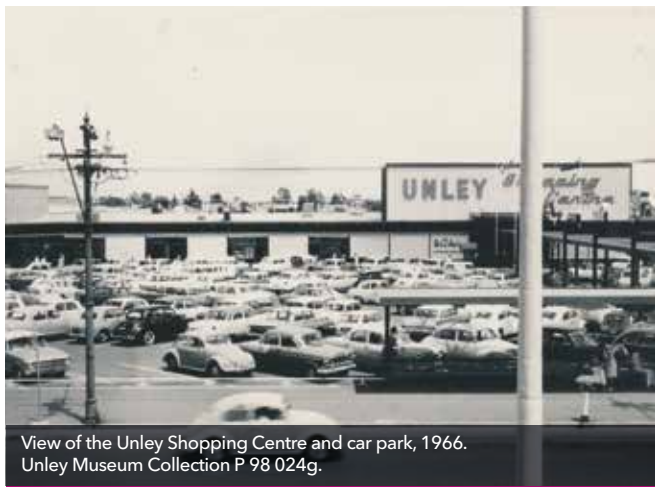
George Styles built this round arch roofed bakehouse. The original oven is still inside the building along Arthur Street. The bakehouse served the local community and acted as an early bakery, store and post office. Information such as public notices could be exchanged through Mr Styles at his long-standing business. A bakery was on this corner for 120 years with a dozen different bakers sliding breads, cakes or other baked goods out of their ovens. The two-storey building on the corner was built in 1912.

George Styles was the son of Francis Styles and grandson of Thomas Styles, both bakers of Little Missenden, Buckinghamshire, England. George Styles arrived with his family in South Australia aboard the *Glen Huntley* in December 1849. He was active in local government, St Augustine's Church and the Unley Institute.

The Reverend John Blacket wrote "It was to George Styles' store that the villagers had to come, through scorching heat, or mud and water, from all parts of the compass to post or to receive a letter."

# 17

## Commerce that replaced cinemas



View of the Unley Shopping Centre and car park, 1966.  
Unley Museum Collection P 98 024g.

## UNLEY SHOPPING CENTRE

1966 | 204 UNLEY ROAD

Originally opened on 19 July 1966, the shopping centre included Unley's public library. It was remodelled in 1976 and again in 1992.

Prior to this shopping centre complex, the site had an arcade of shops and two picture theatres. The Star Theatre opened on 24 January 1928 and its name changed to Odeon around 1948. The other picture theatre, the Ozone, opened closer to Arthur Street on 1 May 1940.



NAME TWO DIFFERENCES BETWEEN TODAY'S SHOPPING CENTRE AND THAT SEEN ABOVE.





- 1 **Original Unley Town Hall & Institute**  
181 Unley Road
  - 2 **Cast Iron Fountain**  
181 Unley Road
  - 3 **St Augustine's Church and School**  
183 Unley Road
  - 4 **Soldiers Memorial Garden**  
226 Unley Road
  - 5 **National Bank**  
232 Unley Road
  - 6 **Cremorne Hotel**  
209 Unley Road
  - 7 **Unley Institute**  
201 Unley Road
  - 8 **Unley Uniting Church**  
187 Unley Road
  - 9 **Court House and Police Station**  
81 & 83 Edmund Avenue
  - 10 **Fire Station & Museum**  
80 Edmund Avenue
  - 11 **Unley Oval**  
Trimmer Terrace
  - 12 **World War II Air Raid Shelter**  
New Town Hall  
Oxford Terrace
  - 13 **Chemist Shop**  
167 Unley Road
  - 14 **Bank SA**  
165 Unley Road
  - 15 **ANZ**  
123 Unley Road
  - 16 **Bakehouse**  
190 Unley Road
  - 17 **Unley Shopping Centre**  
204 Unley Road
  - 18 **Mornington**  
10 Thomas Street
- \* **Look out for**  
Points of interest

# 18

## Luther Scammell's house



Mornington after its first major alterations, c1872.  
Unley Museum Collection P 95 037.

## MORNINGTON

1853, 1872 & 1880 | 10 THOMAS STREET

Jacob Pitman's construction of Mornington took 5 years beginning in 1853 with major additions in 1872 and 1880. Pitman taught his brother's (Sir Isaac) English system of Phonography, or shorthand, in SA and other Australian colonies. Wrought iron railings on its roof outline an area known as a "widow's walk." Mornington Road to the west was named after this property. The extensive gardens and surrounds of Mornington visible in the photograph have been swallowed up by development.

The Scammell family lived here from 1864 until 1922. Luther Scammell was a member of the first SA Parliament and the second mayor of Unley. In 1861 he entered into partnership with FH Faulding, the founder of FH Faulding & Co. Scammell became Faulding's sole owner in 1868.

# DISCOVER HISTORIC UNLEY

## ACKNOWLEDGEMENTS

The City of Unley would like to thank the working party for producing this brochure:

Cr Don Palmer, Cr Jennie Boisvert

Elizabeth Hartnell, Matthew Ives

Bridget Jolly, Deane Kemp (FOCUS)

James Morris, Bronwyn Phillips, & Suzette Vidura

Original design by Arketype, brochure design by Inga Lidums/Salmon Studio. Published 2015.

## WANT TO KNOW MORE ABOUT THE HISTORY OF UNLEY?

### Visit the Unley Museum

80 Edmund Ave, Unley.

Open Monday to Wednesday

10am - 4pm and Sunday 1.30 - 4.30pm.

Free admission. Phone 8372 5117.

[www.unley.sa.gov.au/museum](http://www.unley.sa.gov.au/museum)

Funding for the brochure was provided by the City of Unley, the Friends of the Unley Museum and by FOCUS (Friends Of the City of Unley Society, Inc).

