

## King William Road Streetscape Upgrade Project - Pedestrian and Cyclist detours

A section of the Mike Turtur Bikeway and the shared pedestrian path on King William Road, Unley is closed for the next stage of construction works. Detours are in place. Please refer to the map overleaf.

### When?

The Mike Turtur bikeway and pedestrian path will remain closed until the end of June 2026.

### What to expect

A section of the Mike Turtur Bikeway and pedestrian path on the western side of King William Road between Young Street and Greenhill Road is closed to pedestrians and cyclists.

- Cyclists and pedestrians are directed to Bartley Crescent.
- Pedestrians are directed to the eastern side of King William Road.
- Pedestrian and cyclists can cross King William Road in three locations in the works area.
- Signage is in place.

### Contact

For construction enquiries or site management matters, please contact the Beltrame Civil Community Relations Team:

☎ 0488 516 602

✉ [KWRUenquiries@beltramecivil.com.au](mailto:KWRUenquiries@beltramecivil.com.au)

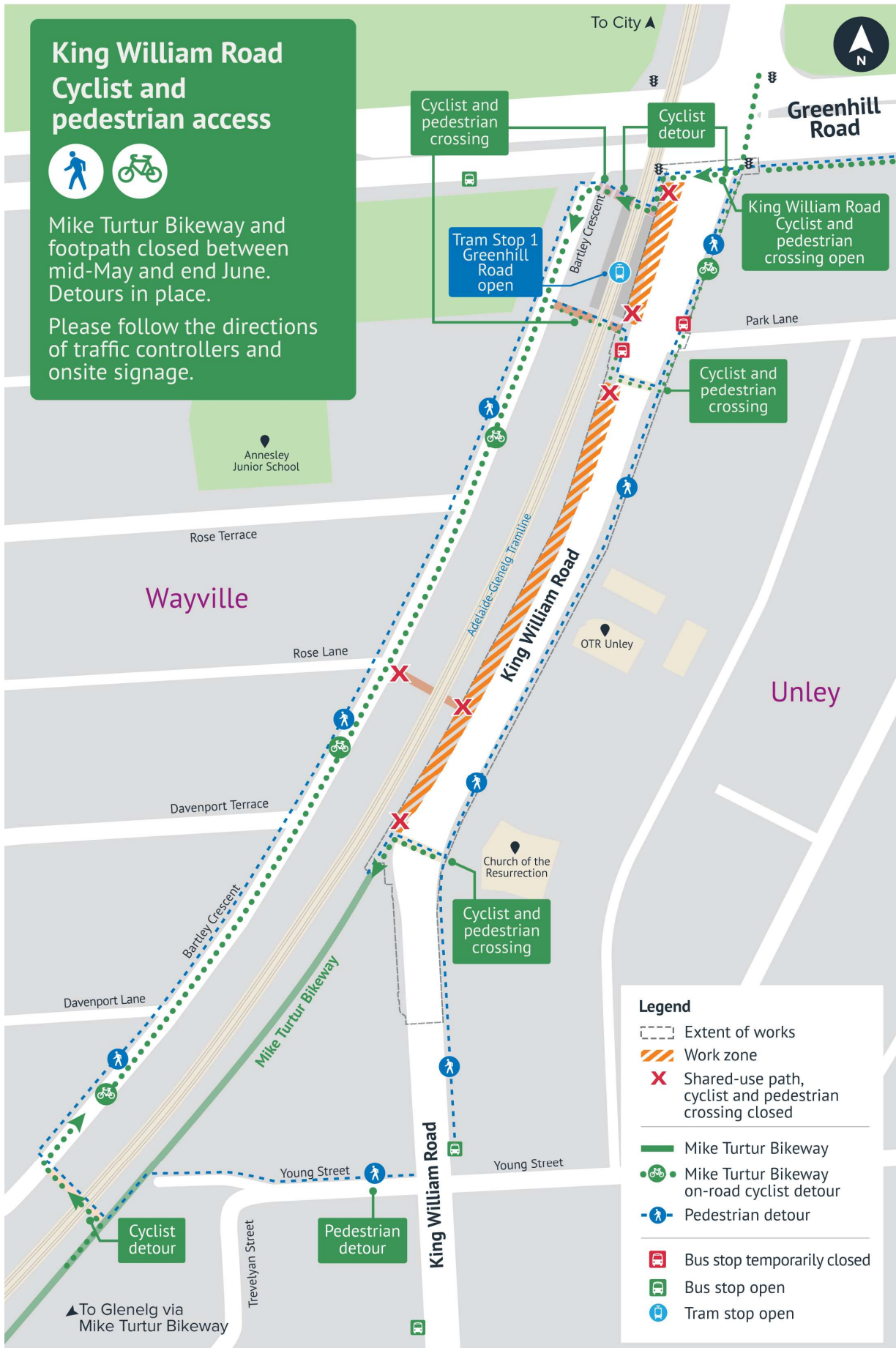
We thank you for your patience while these important works are completed.

## King William Road Cyclist and pedestrian access












Mike Turtur Bikeway and footpath closed between mid-May and end June. Detours in place.

Please follow the directions of traffic controllers and onsite signage.



### Legend

-  Extent of works
-  Work zone
-  Shared-use path, cyclist and pedestrian crossing closed
-  Mike Turtur Bikeway
-  Mike Turtur Bikeway on-road cyclist detour
-  Pedestrian detour
-  Bus stop temporarily closed
-  Bus stop open
-  Tram stop open